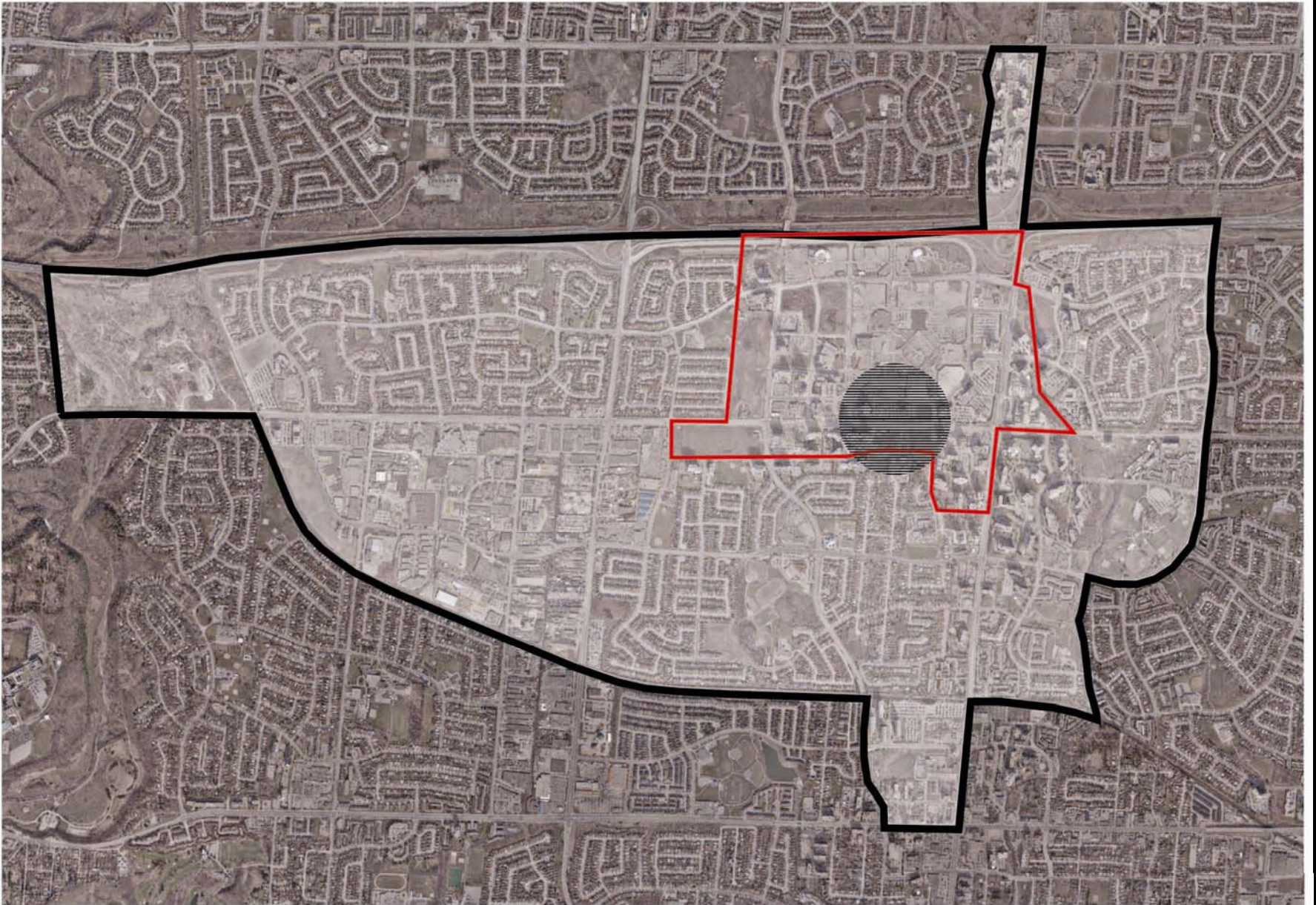


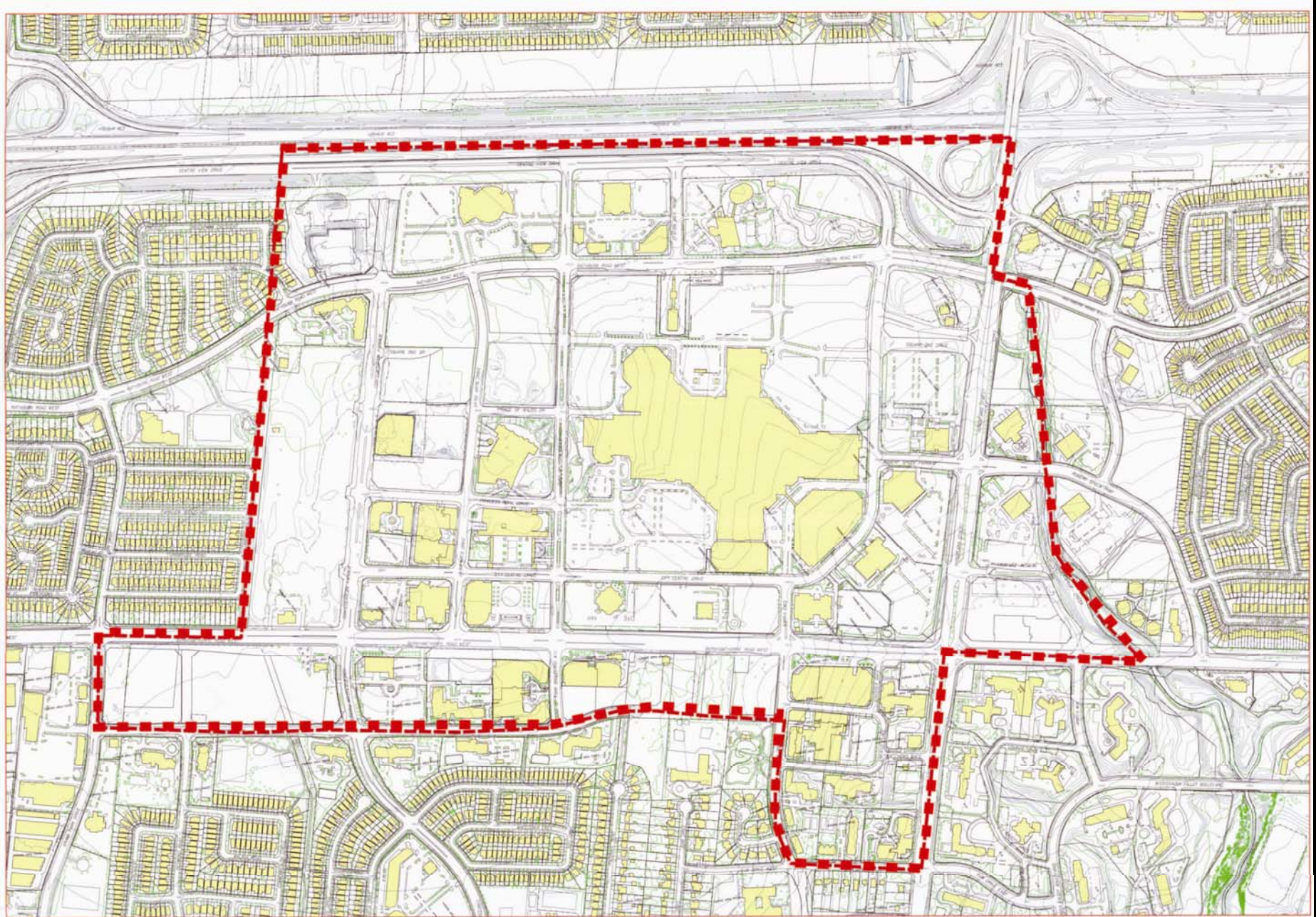




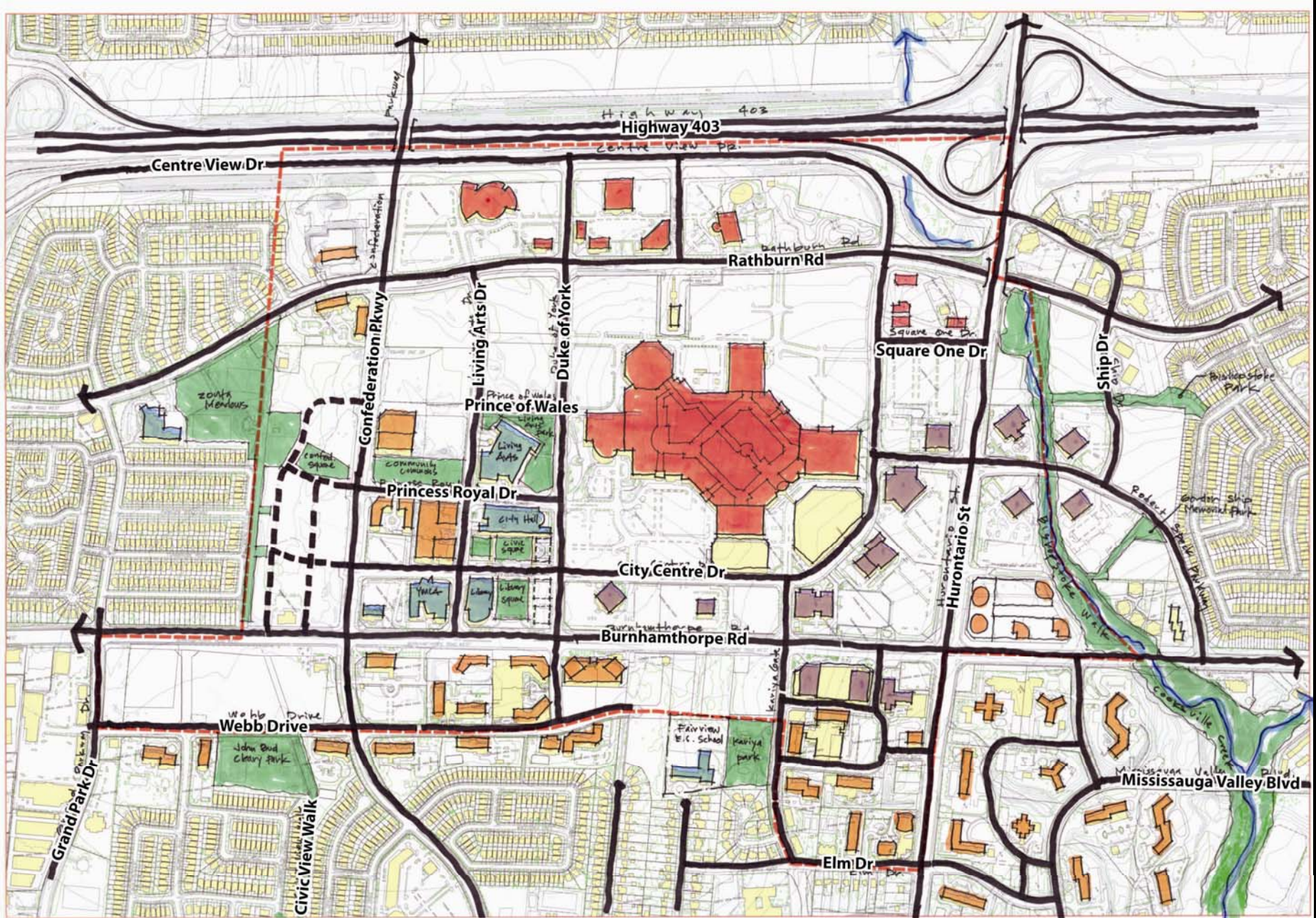
VISION



3 Levels of Focus



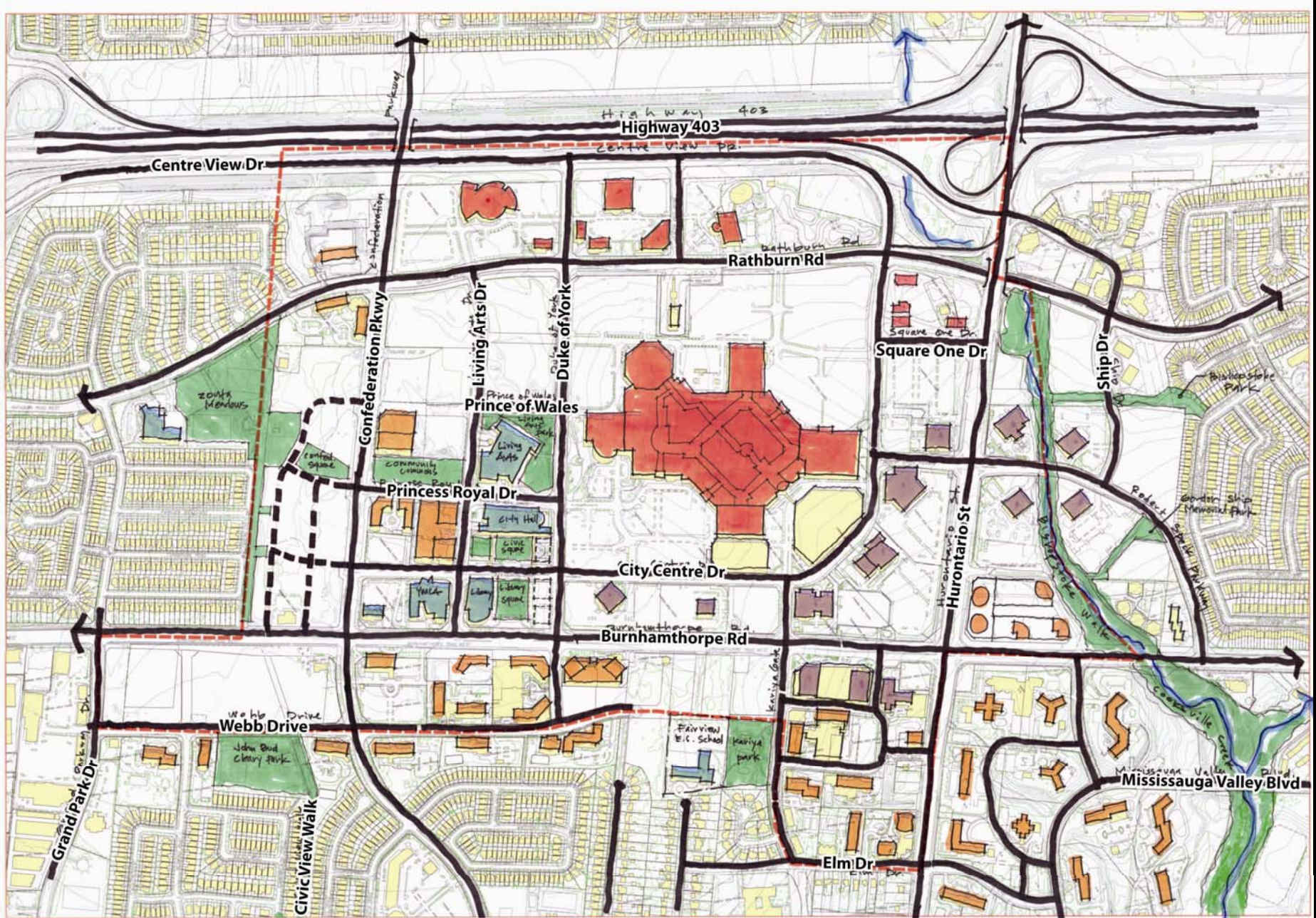
Focus Area



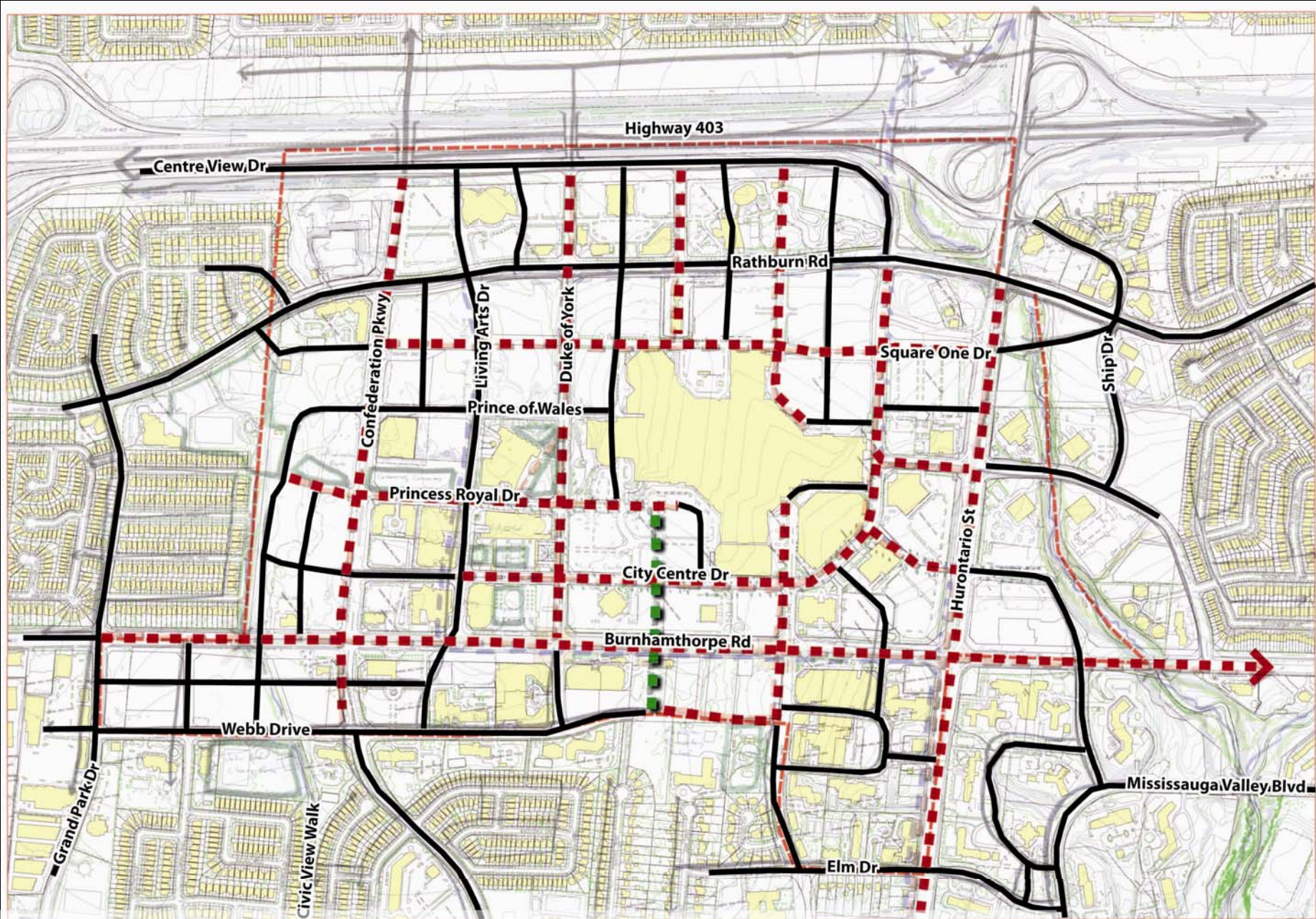
Context: Existing Development



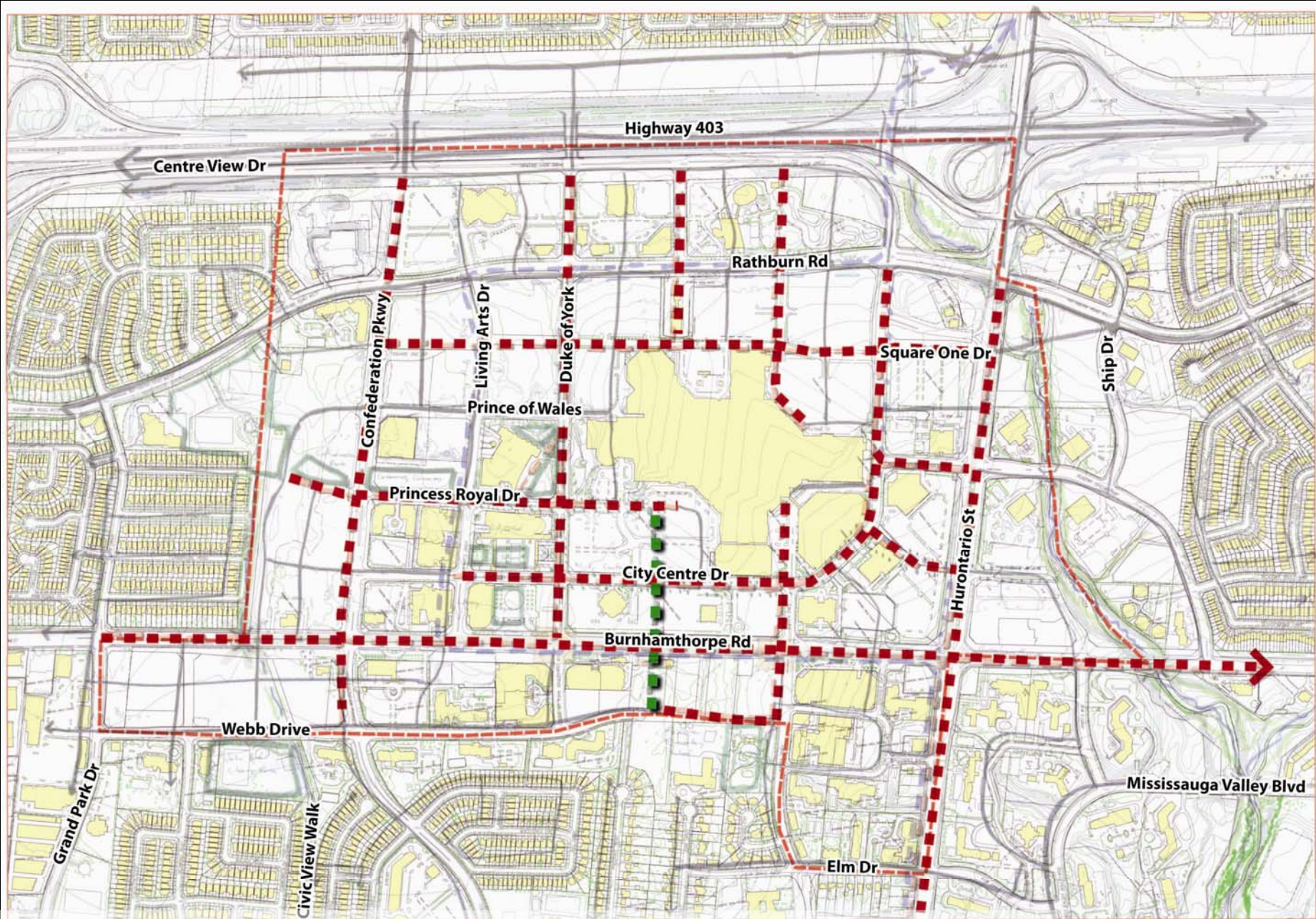




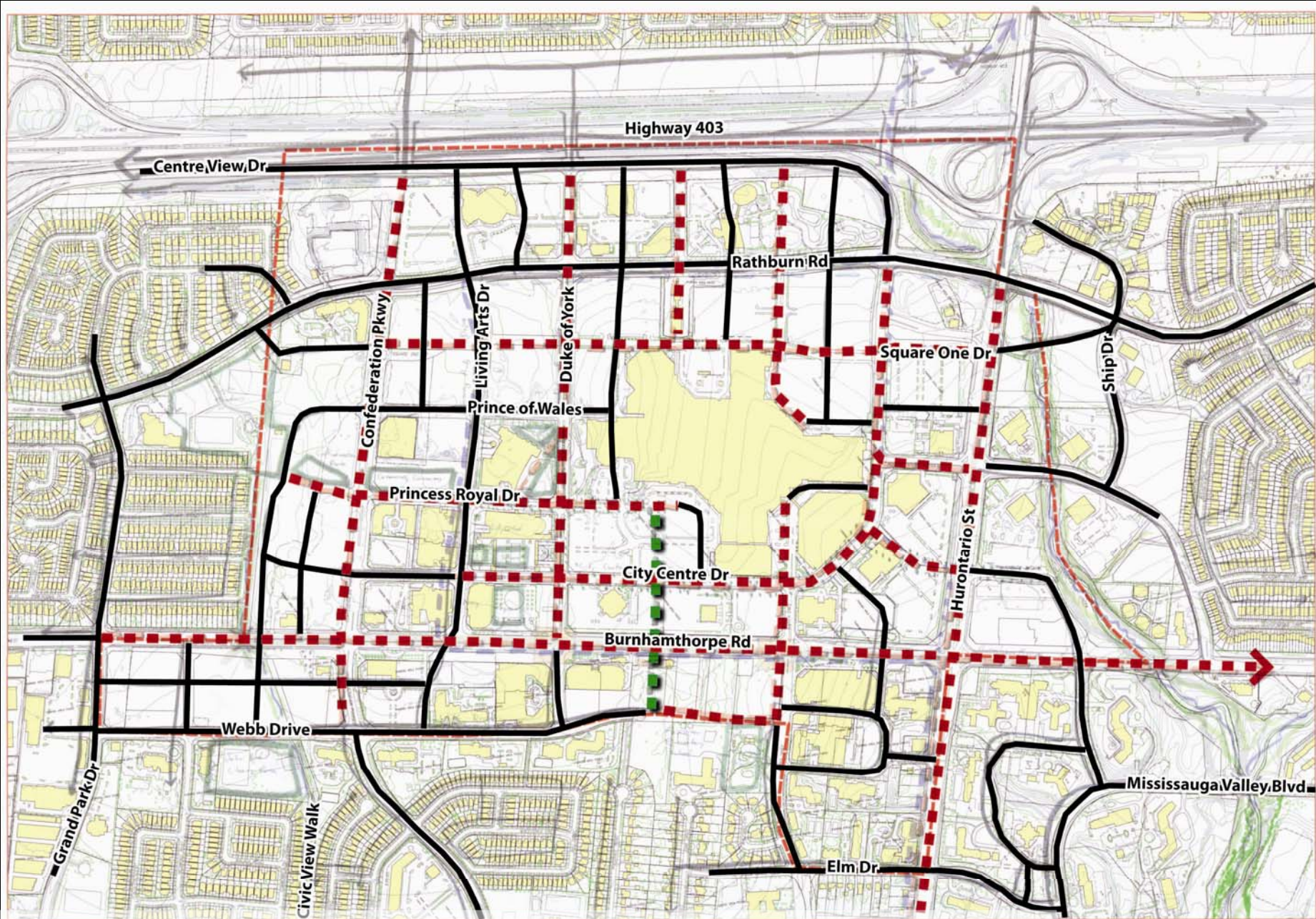
Context: Existing Development



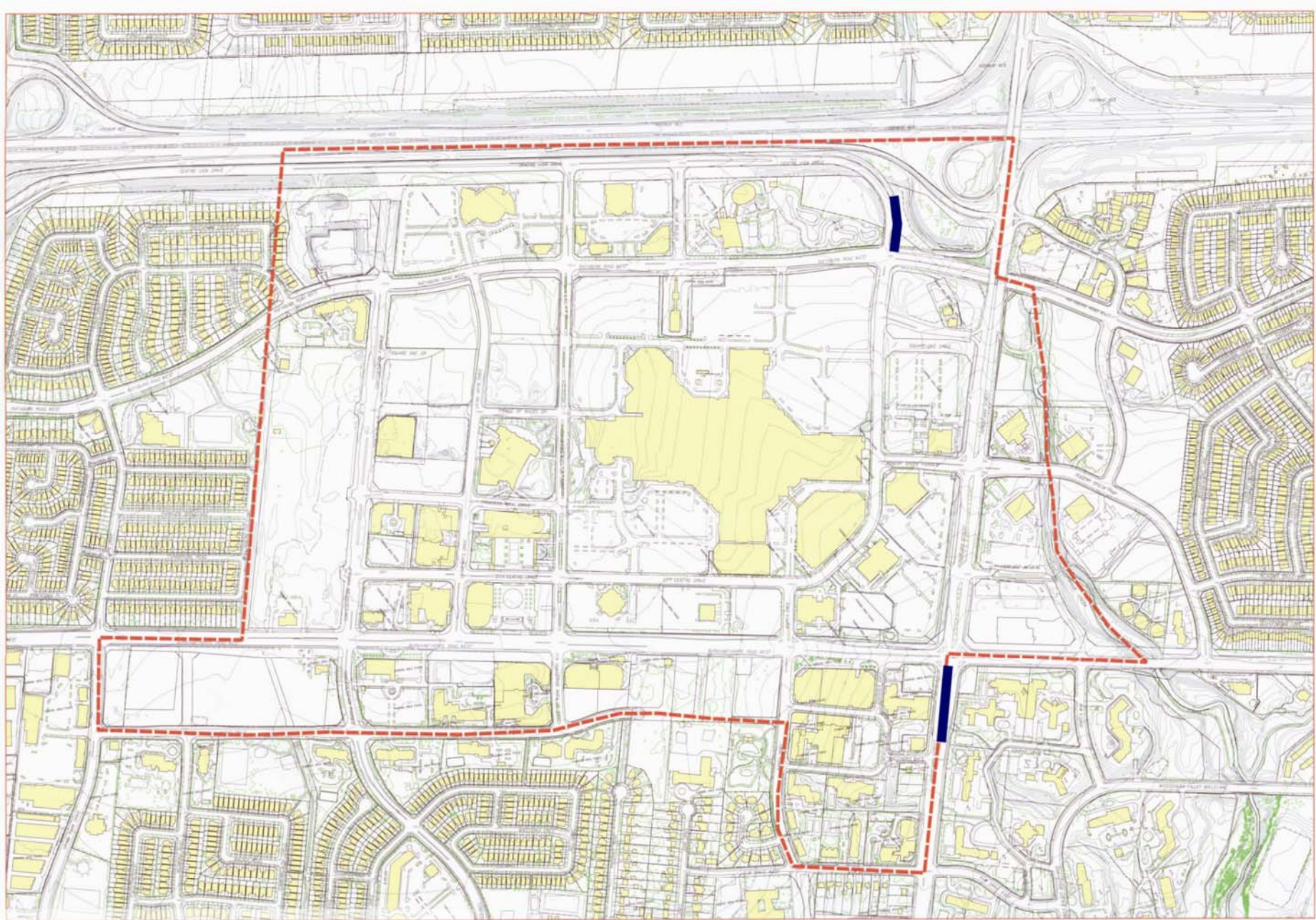
Block Structure – Framework - A Streets



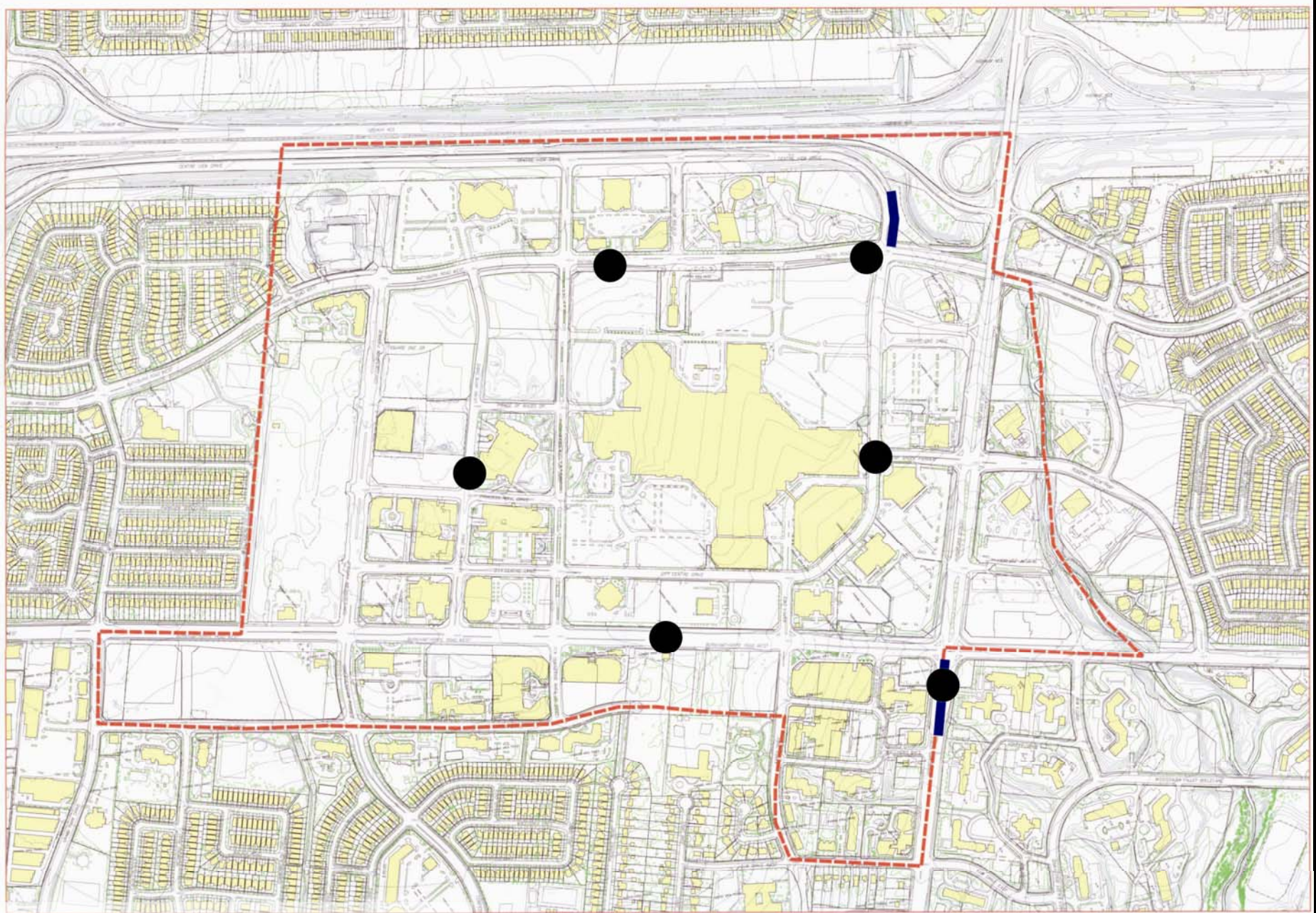
Block Structure – Framework - A Streets



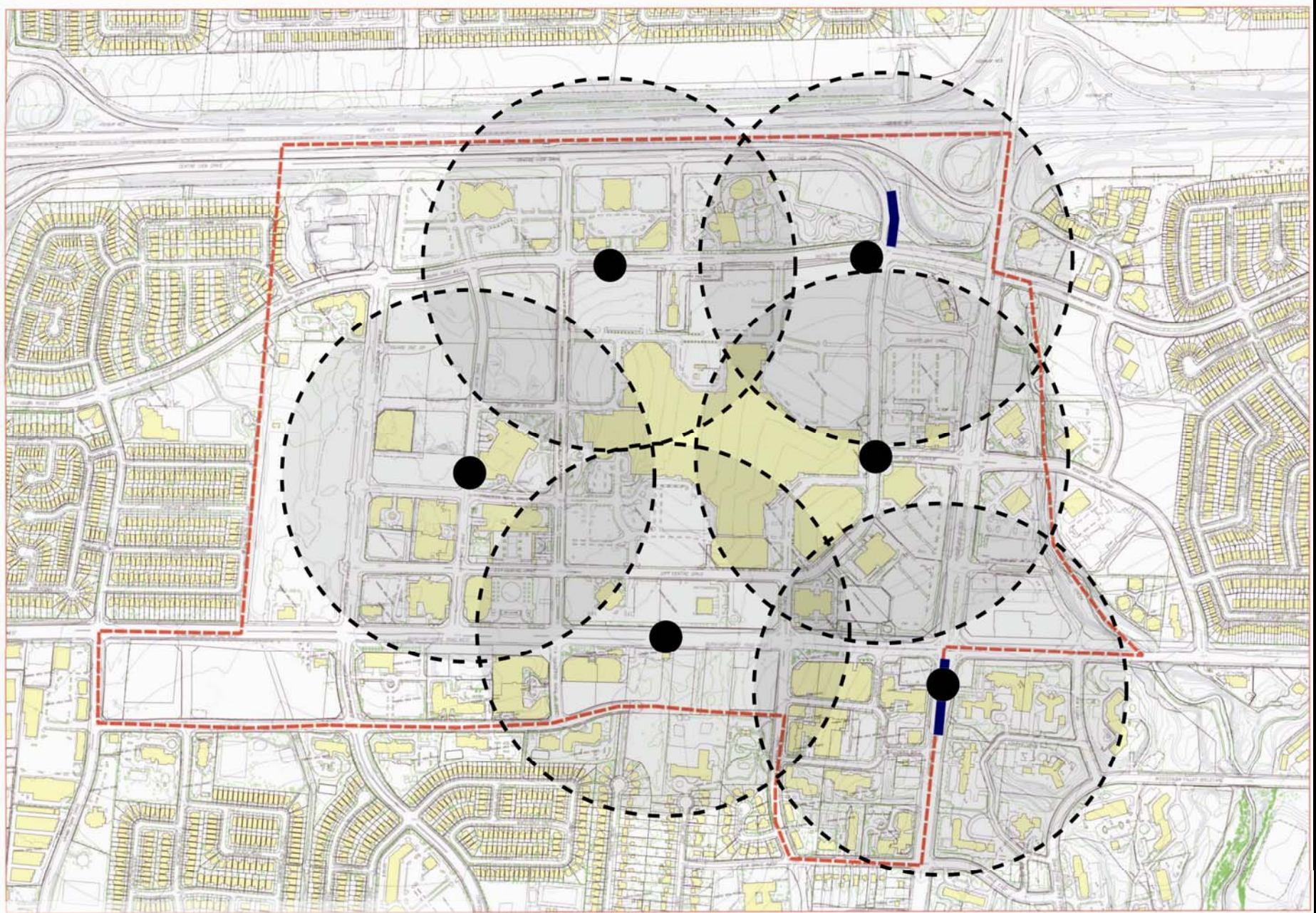
Block Structure – Framework - A Streets



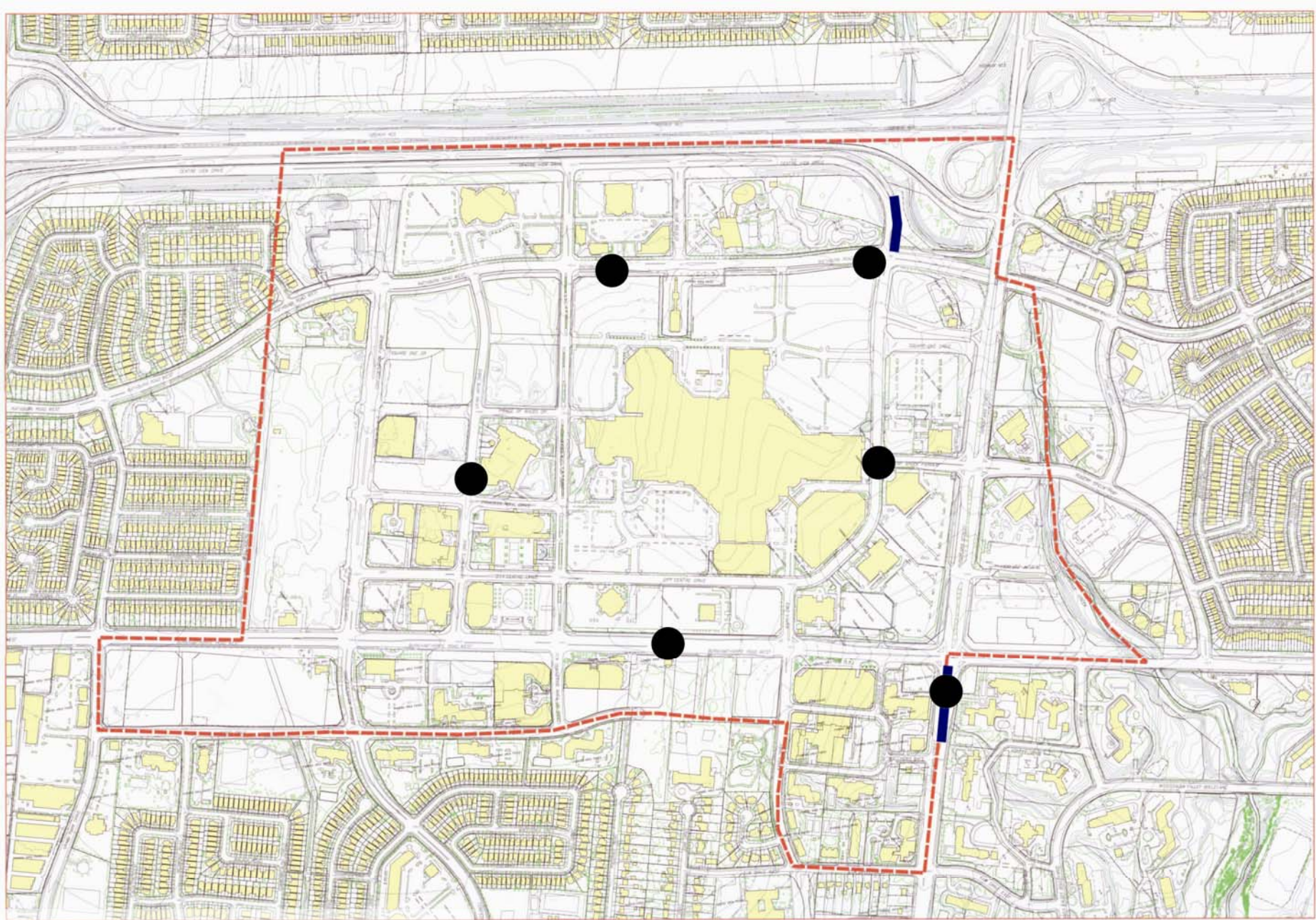
Transit to Support



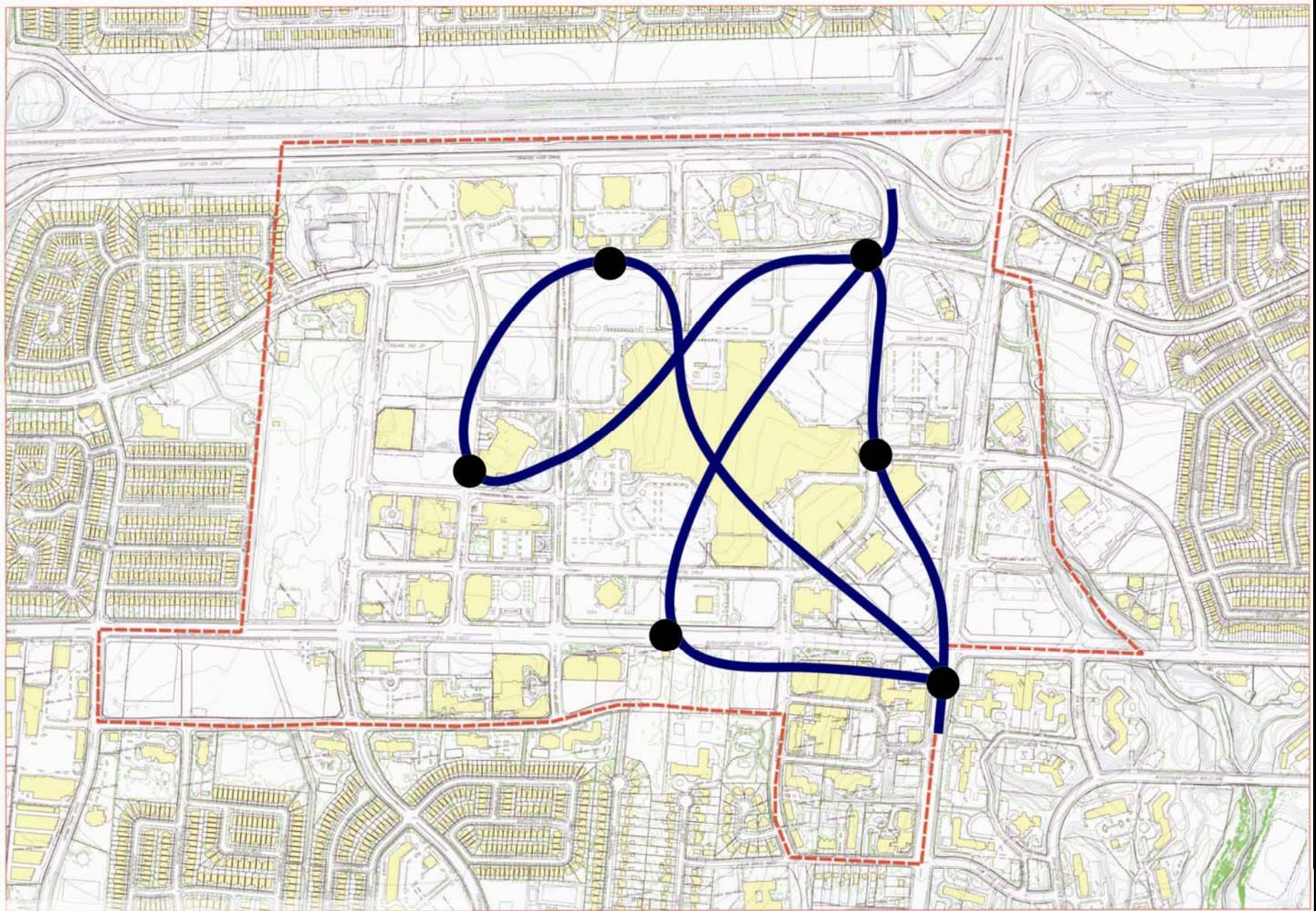
Transit to Support



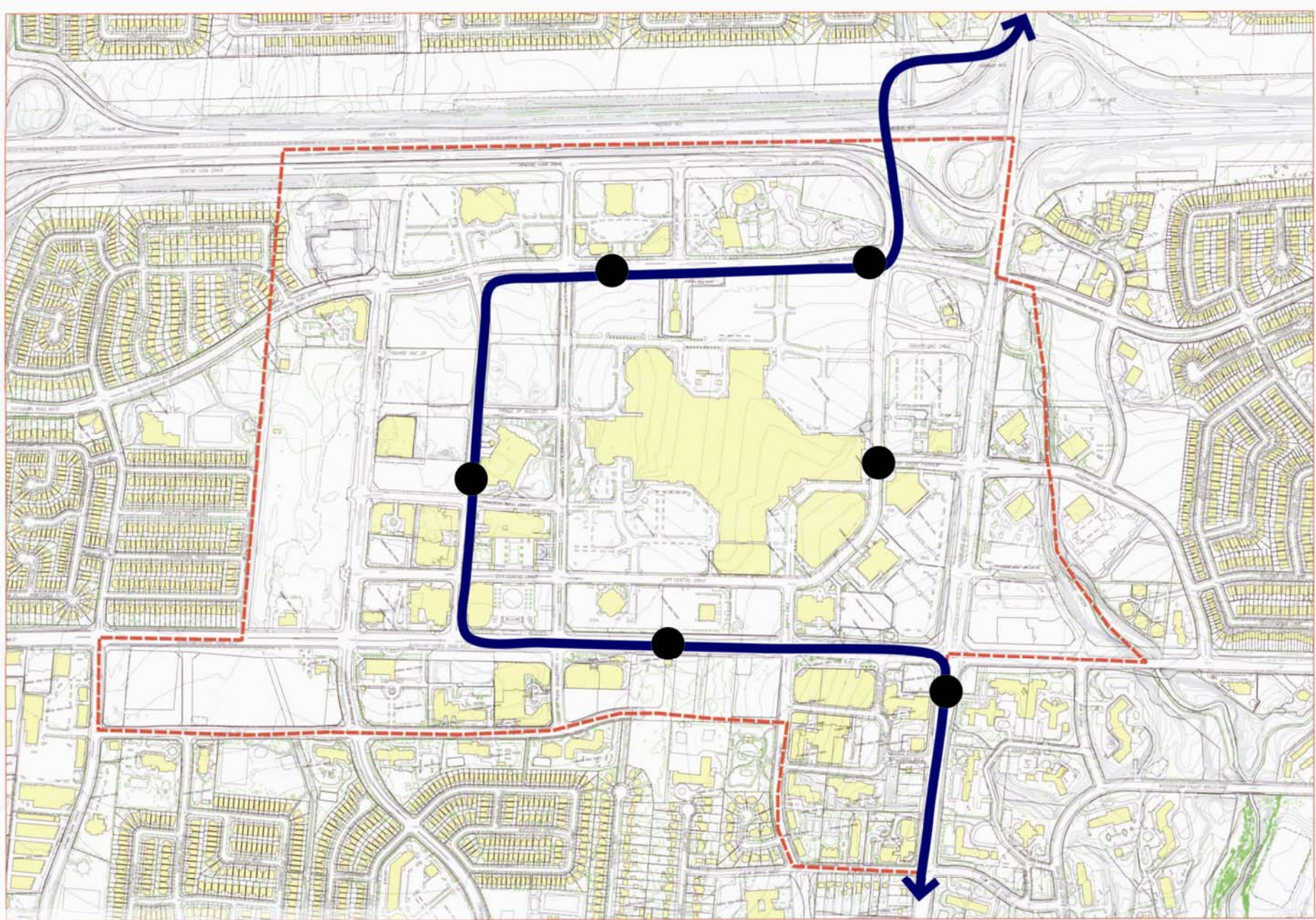
Transit to Support



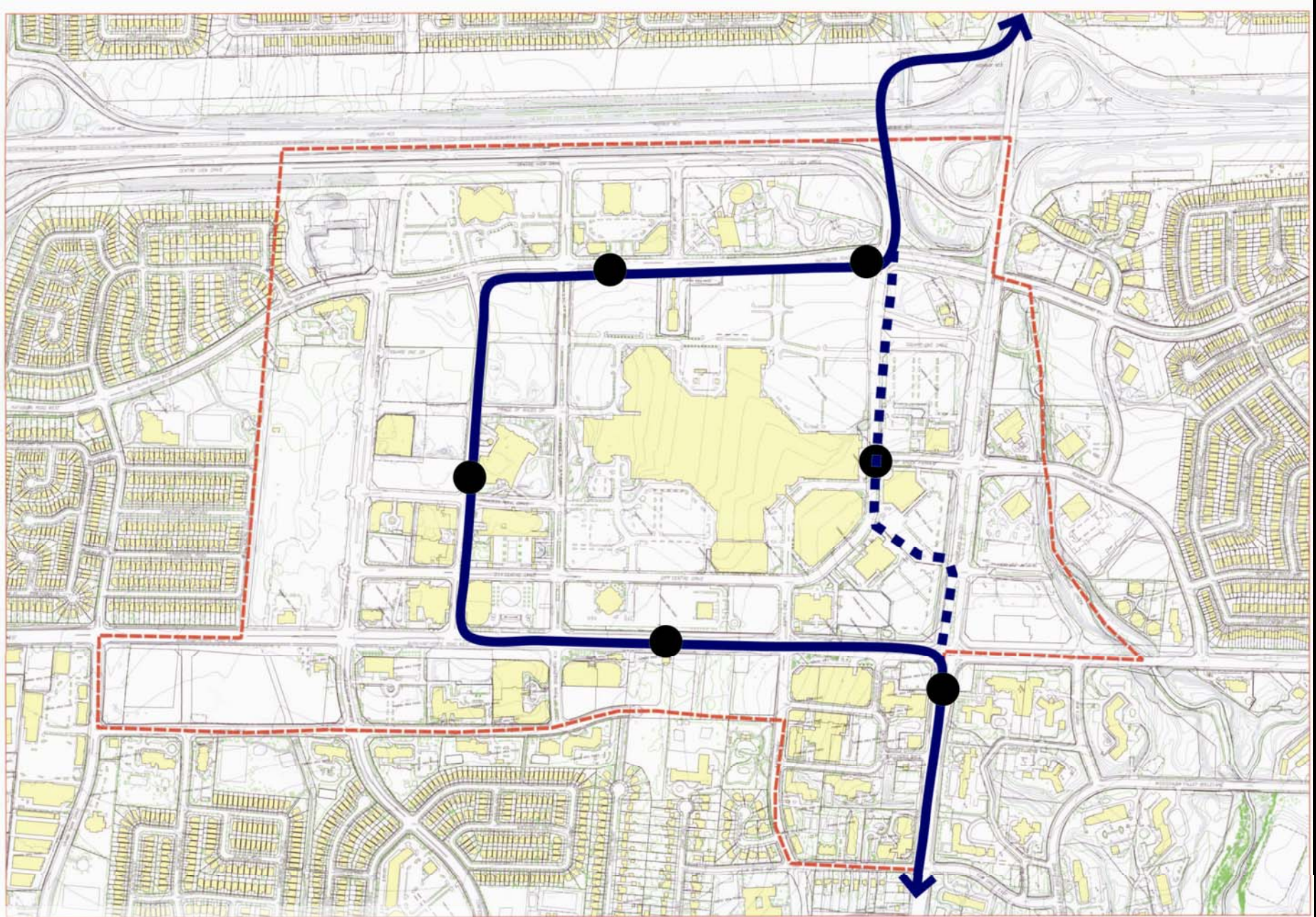
Transit to Support



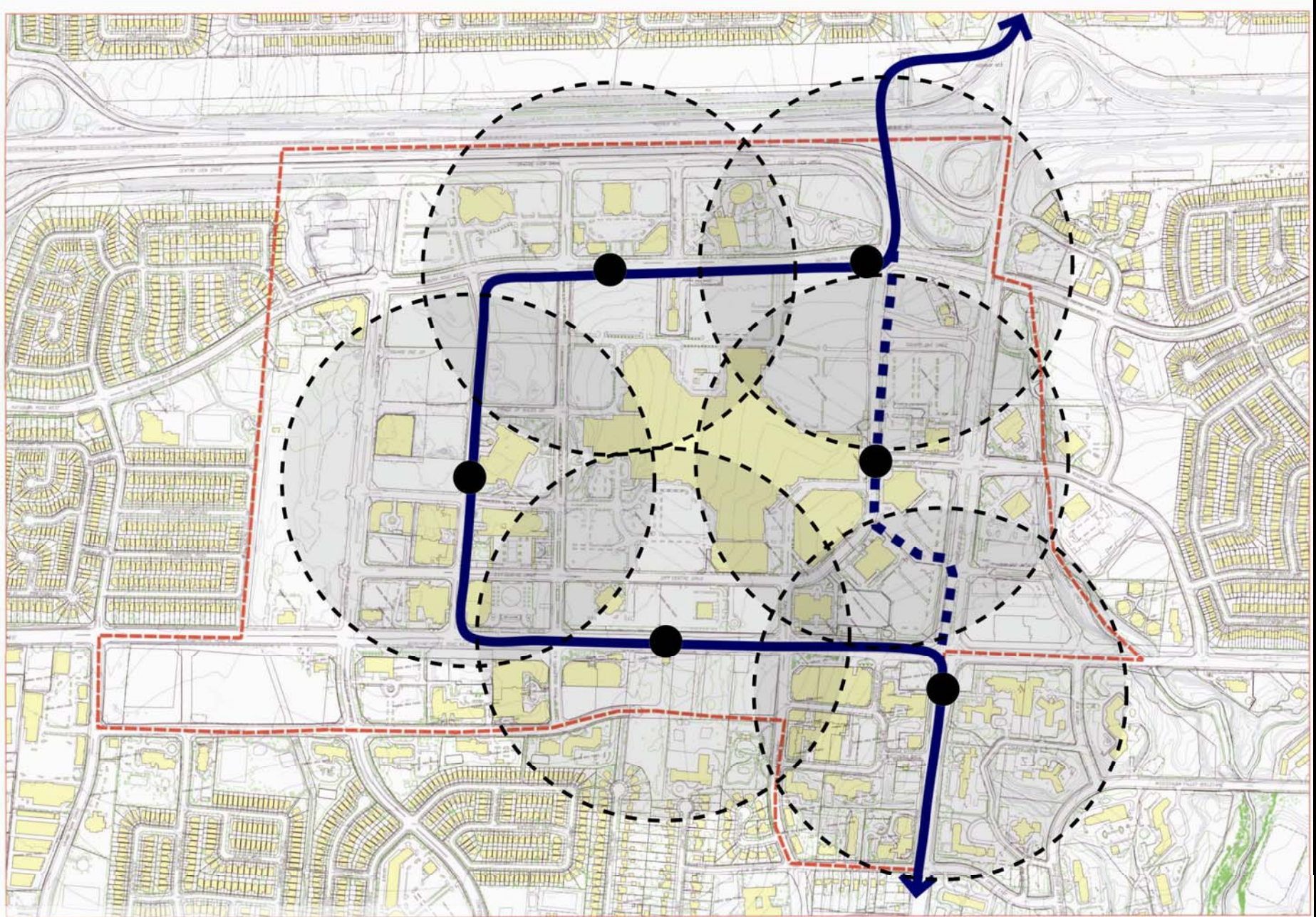
Transit to Support



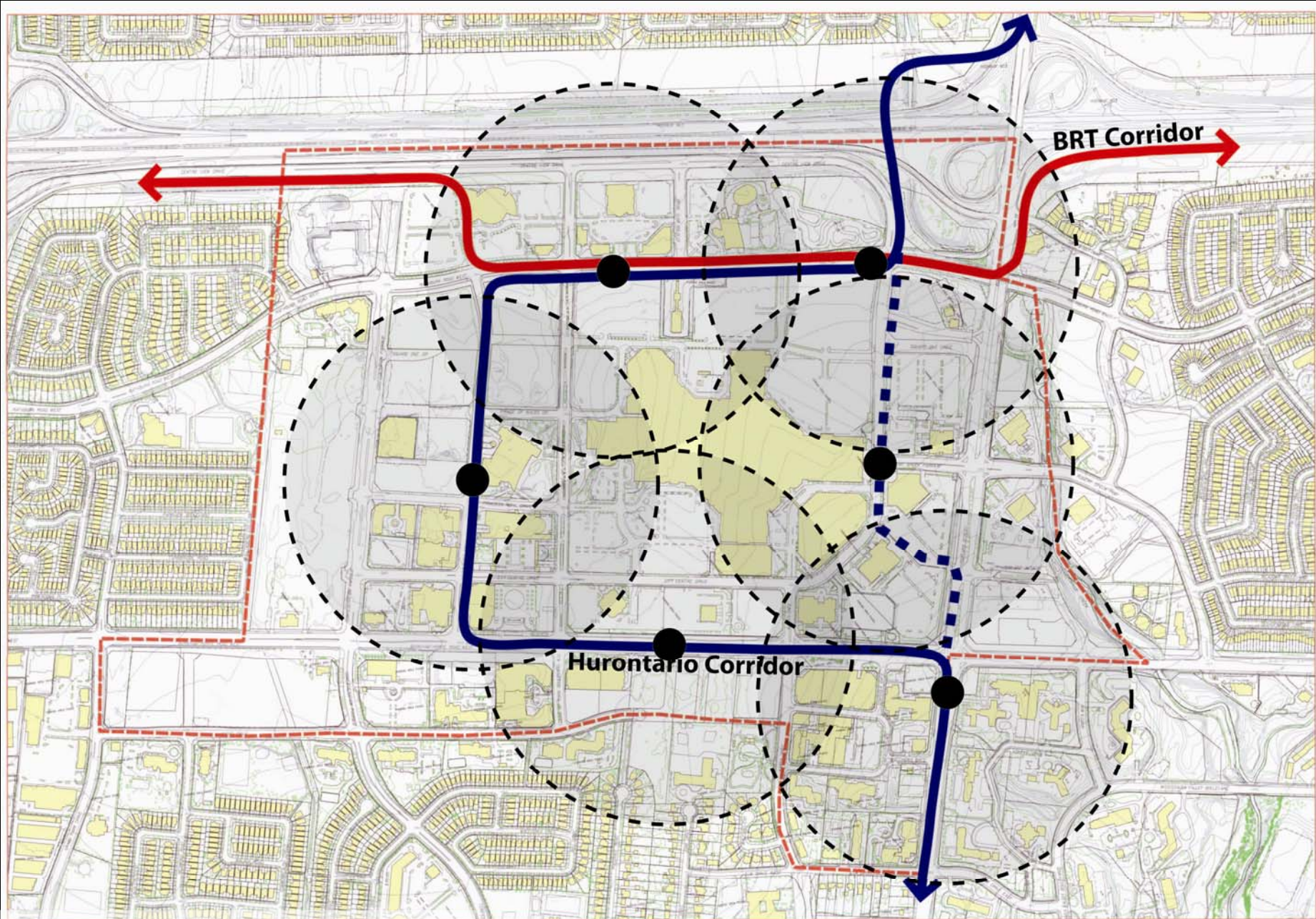
Transit to Support



Transit to Support

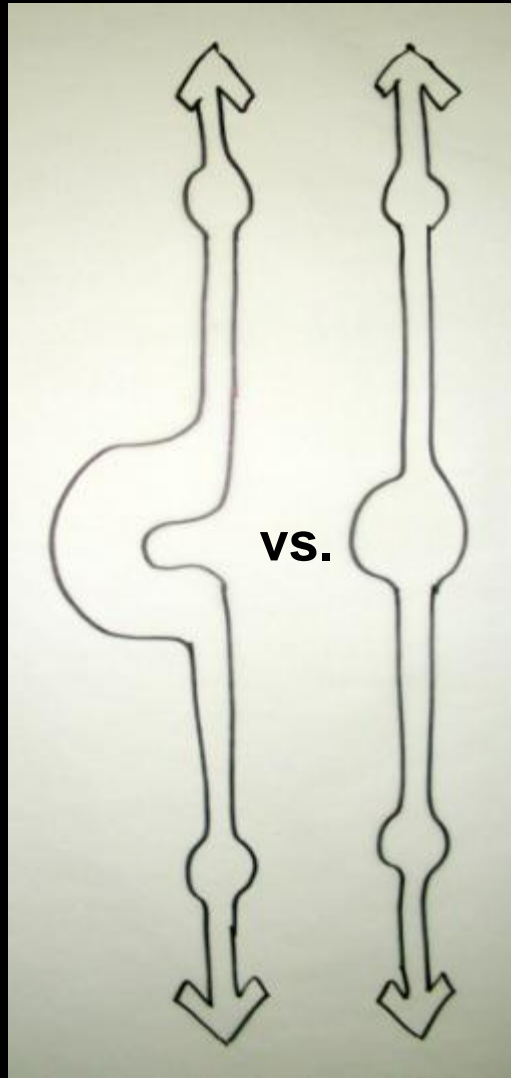


Transit to Support



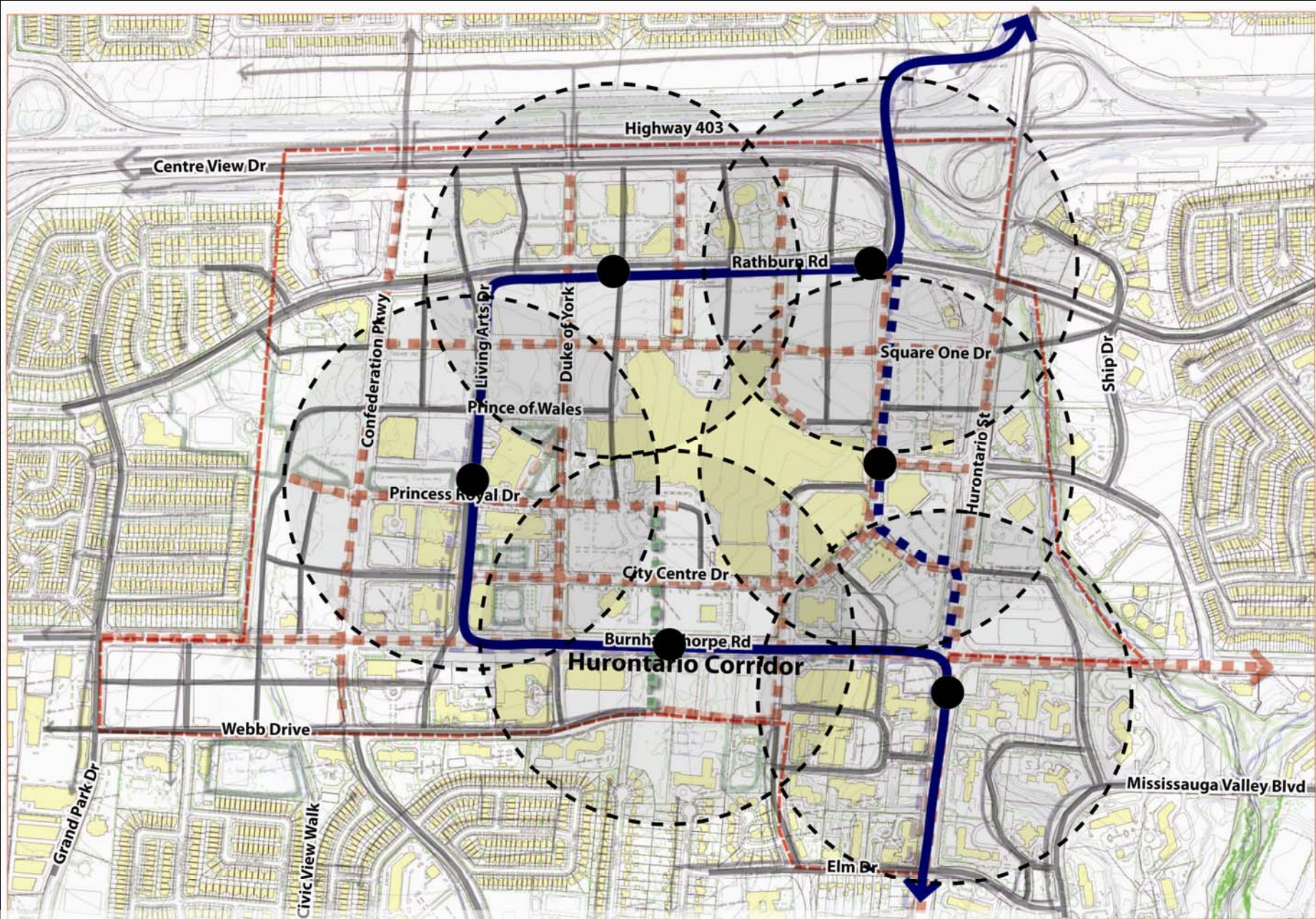
Transit to Support

Downtown Option

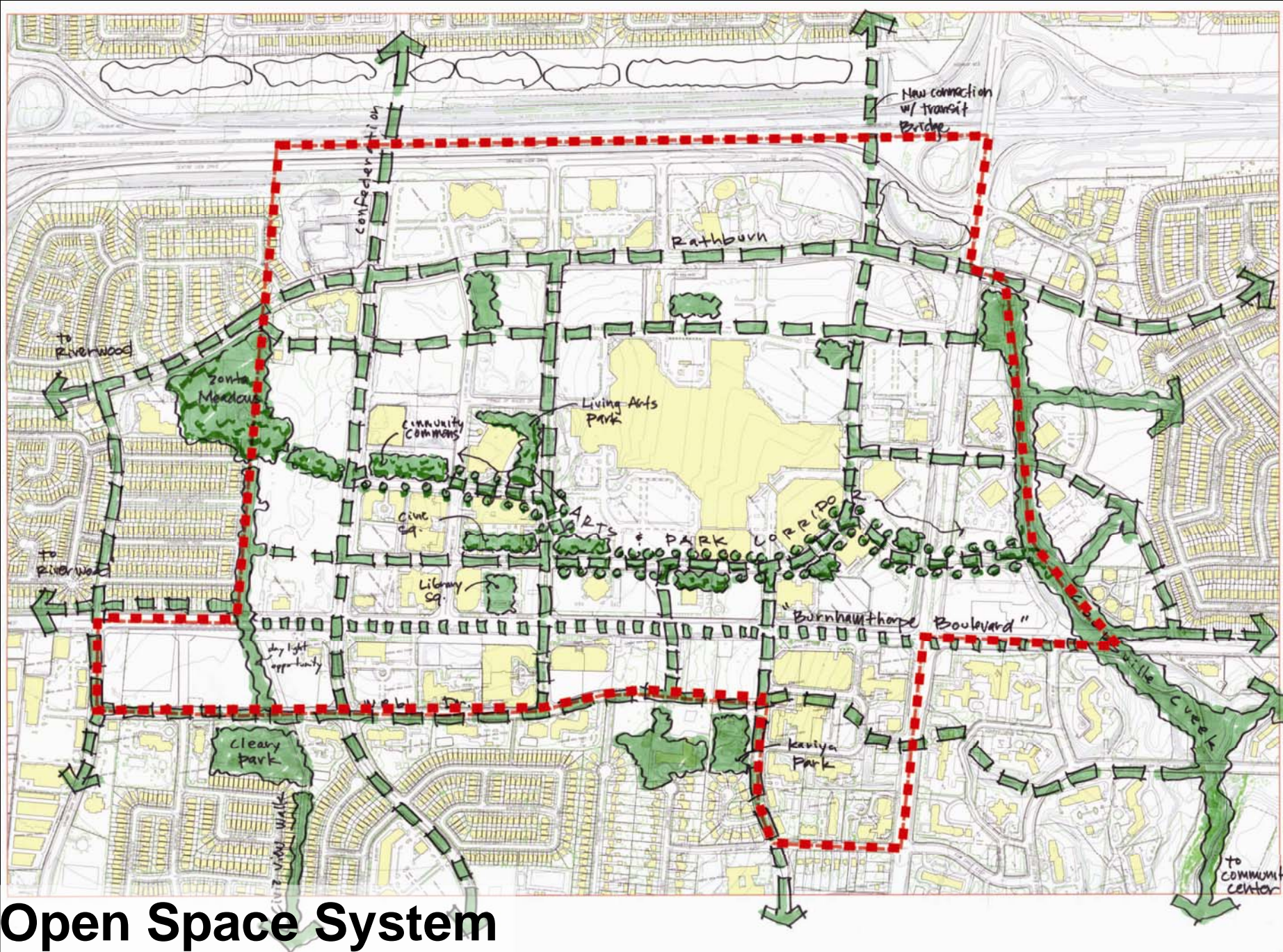


Corridor Option

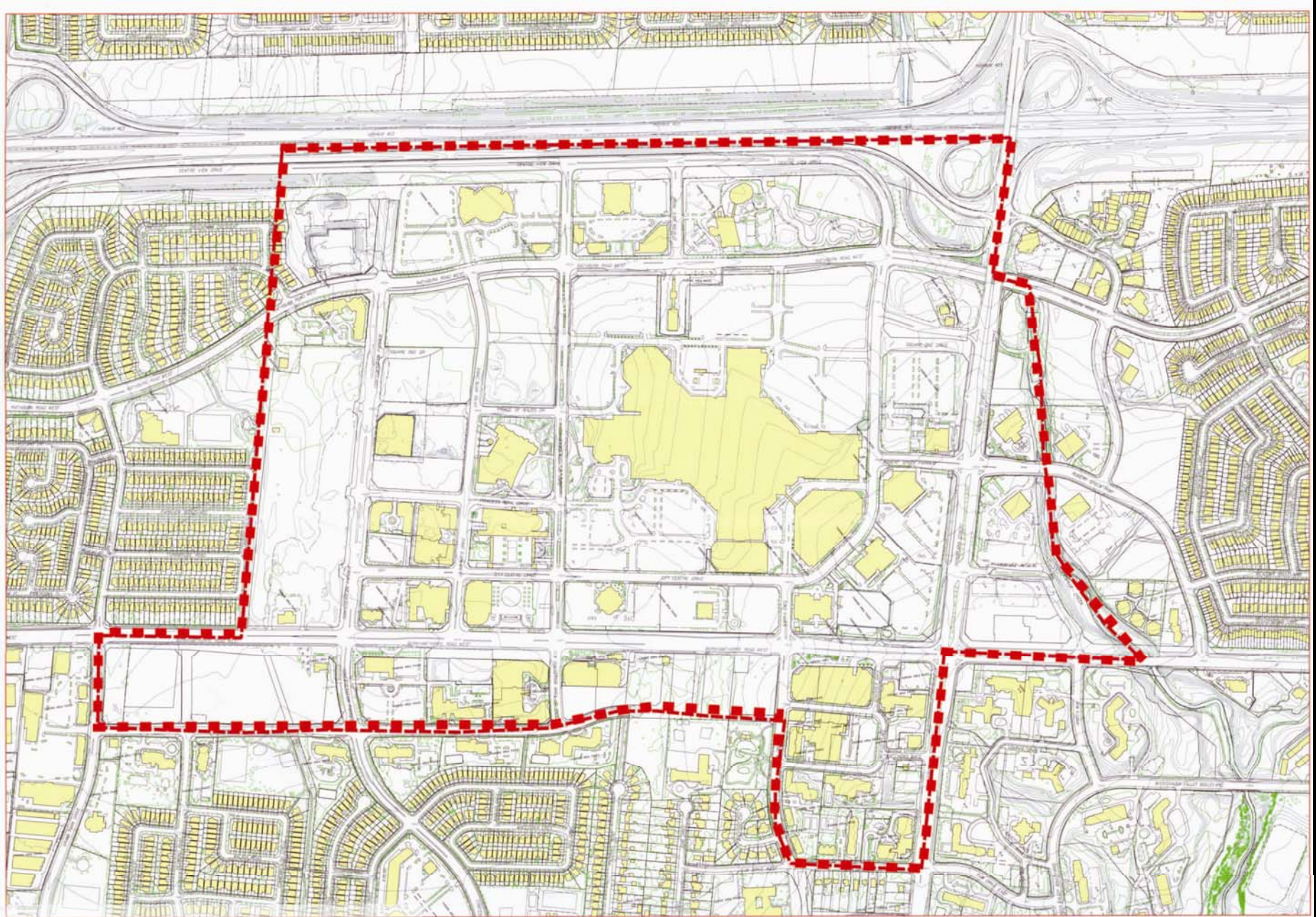
Hurontario High Order Transit Options



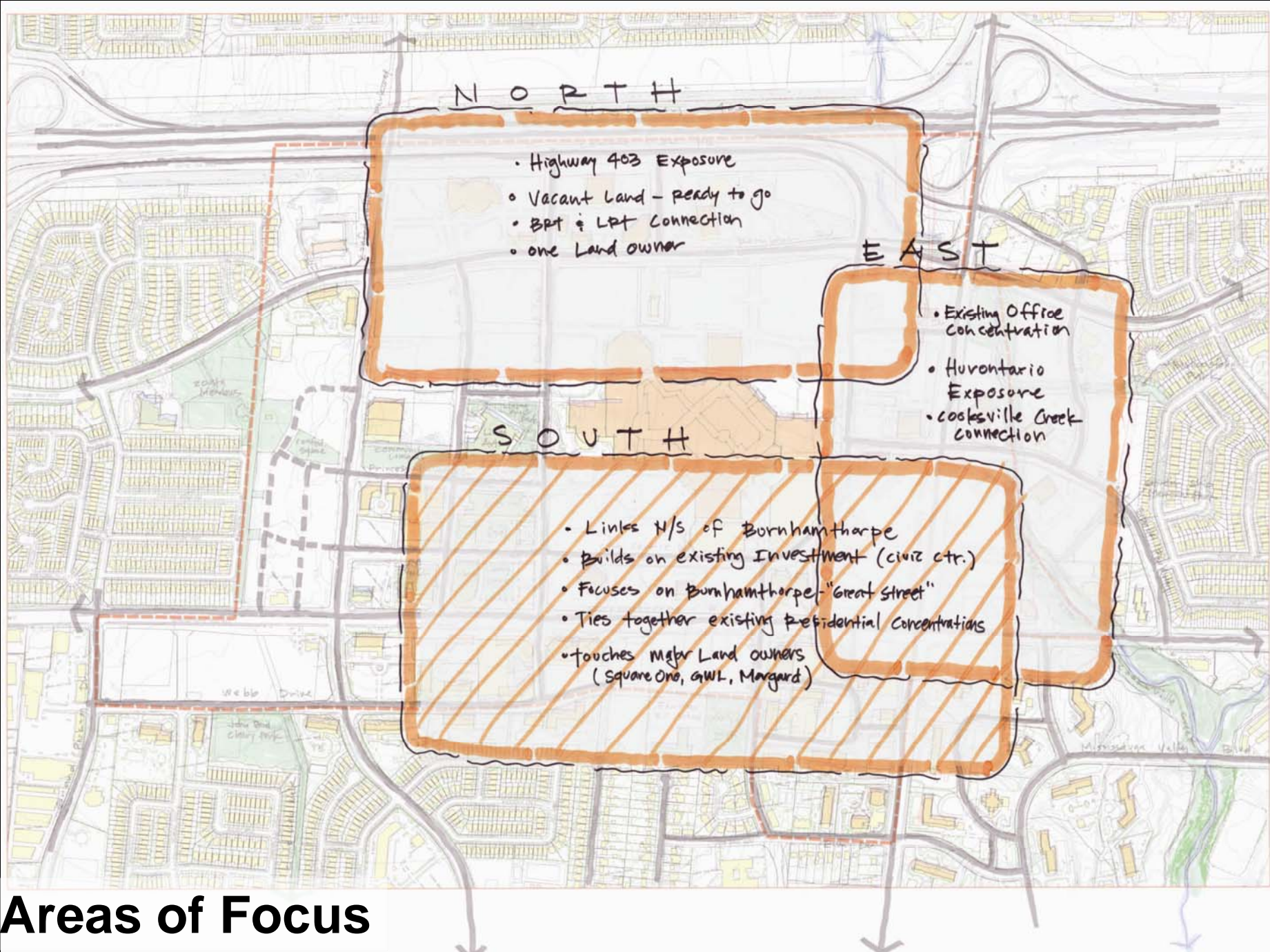
Block Structure – Framework - A Streets



Open Space System



Area of Focus?



N O R T H

- Highway 403 Exposure
- Vacant Land - ready to go
- BRT & LRT Connection
- one Land owner

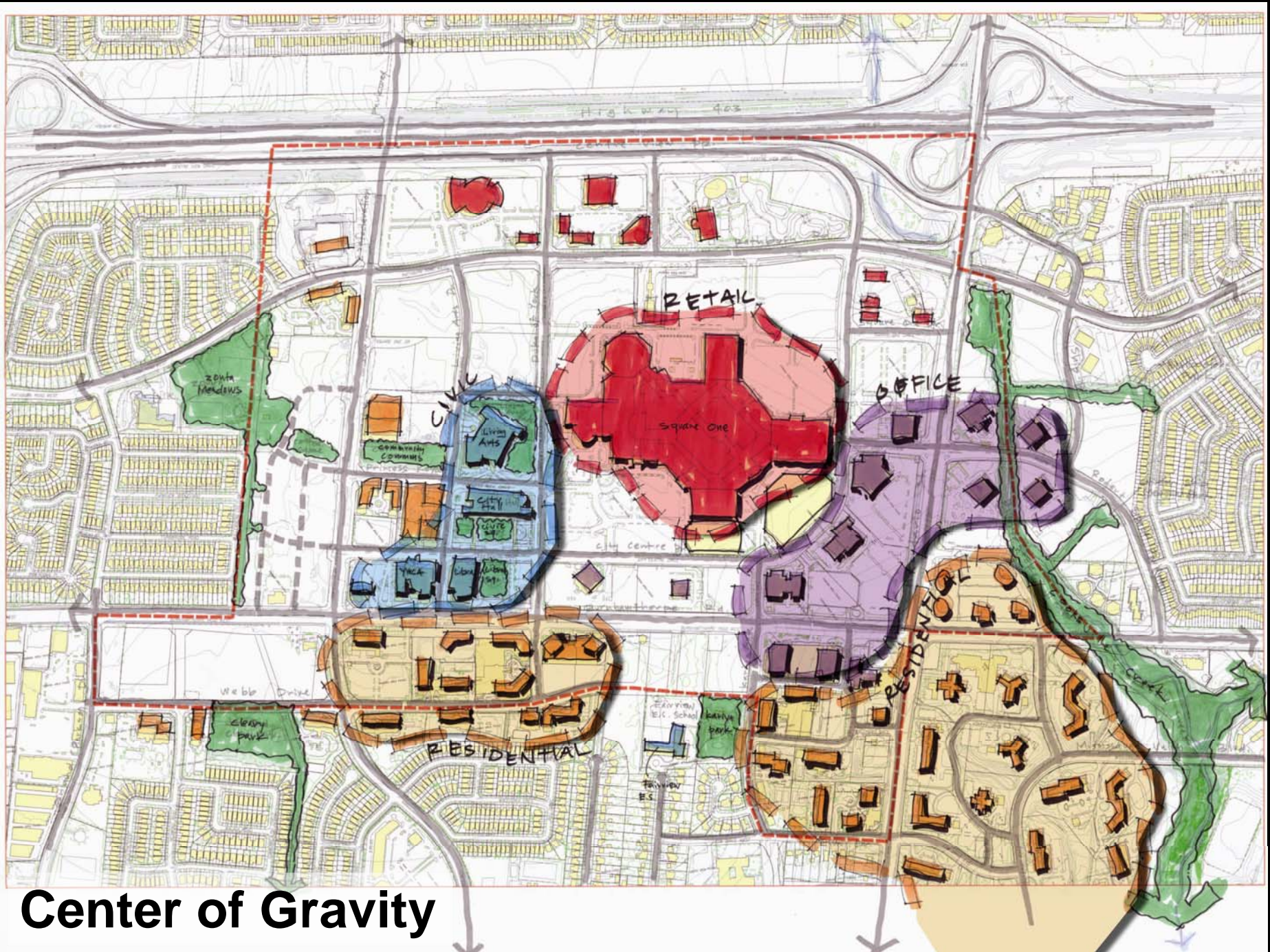
E A S T

- Existing Office Concentration
- Hurontario Exposure
- Cooksville Creek Connection

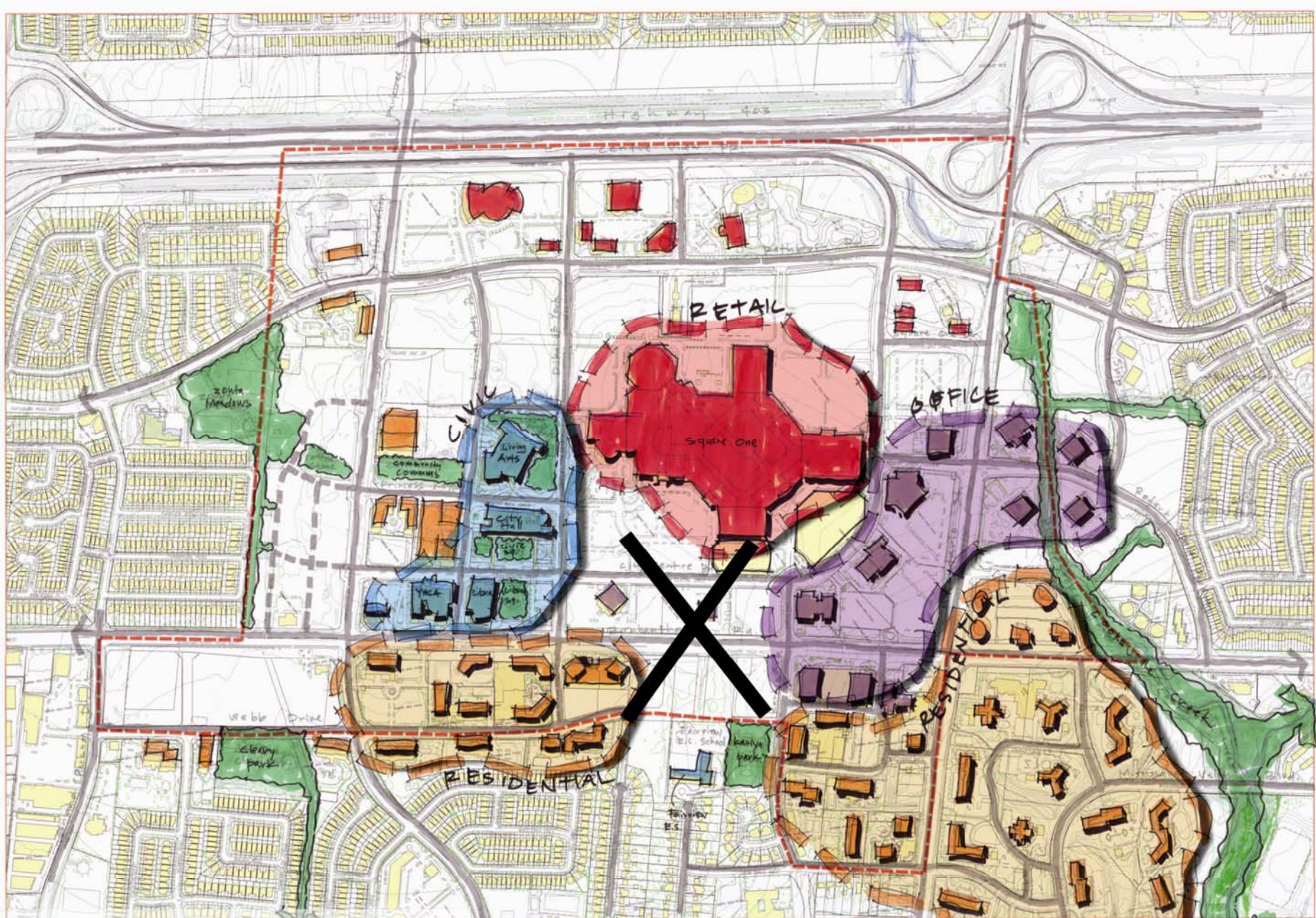
S O U T H

- Lines N/S of Burnhamthorpe
- Builds on existing Investment (civic ctr.)
- Focuses on Burnhamthorpe - "Great Street"
- Ties together existing Residential Concentrations
- touches major Land owners (Square One, GWL, Margard)

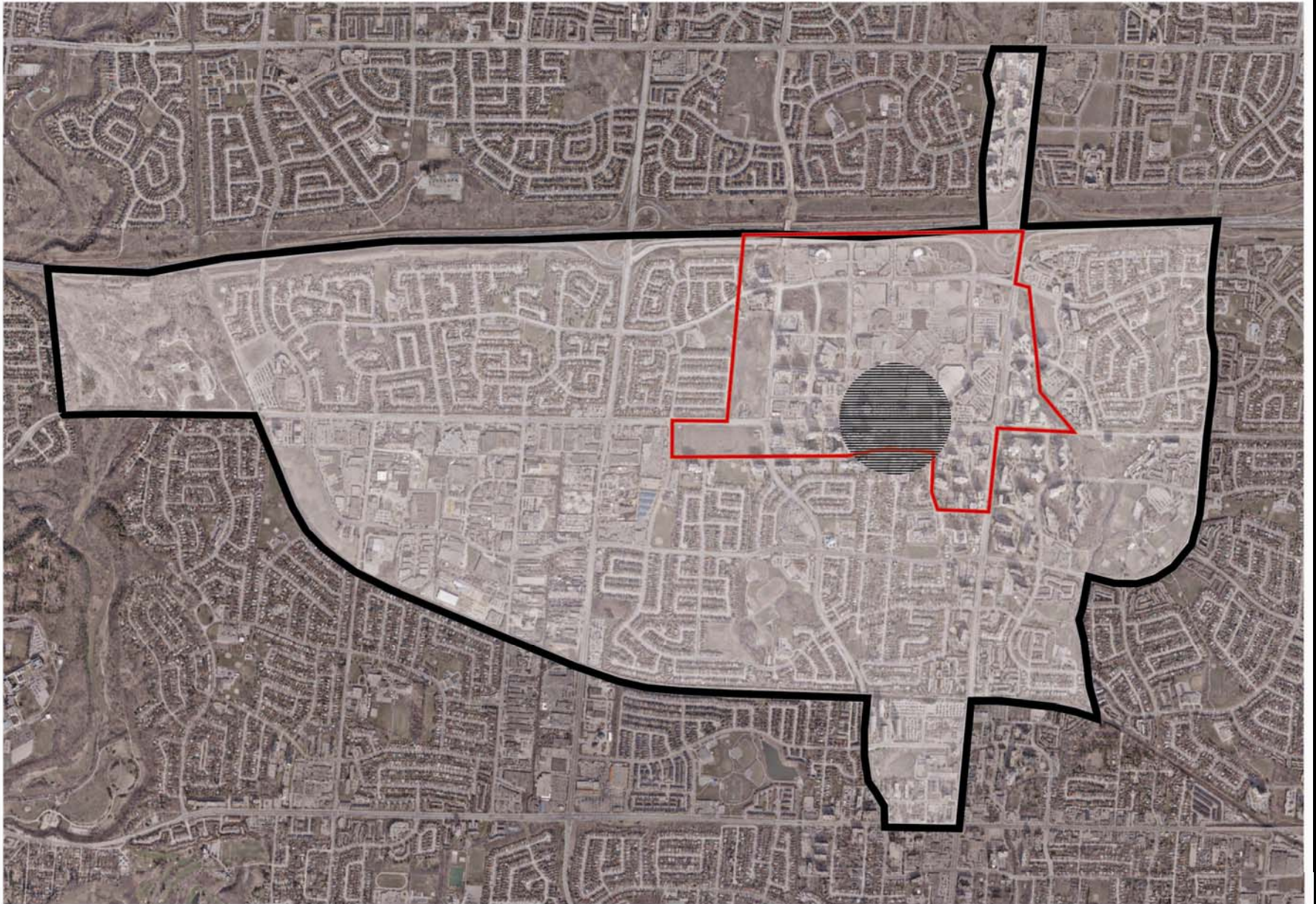
Areas of Focus



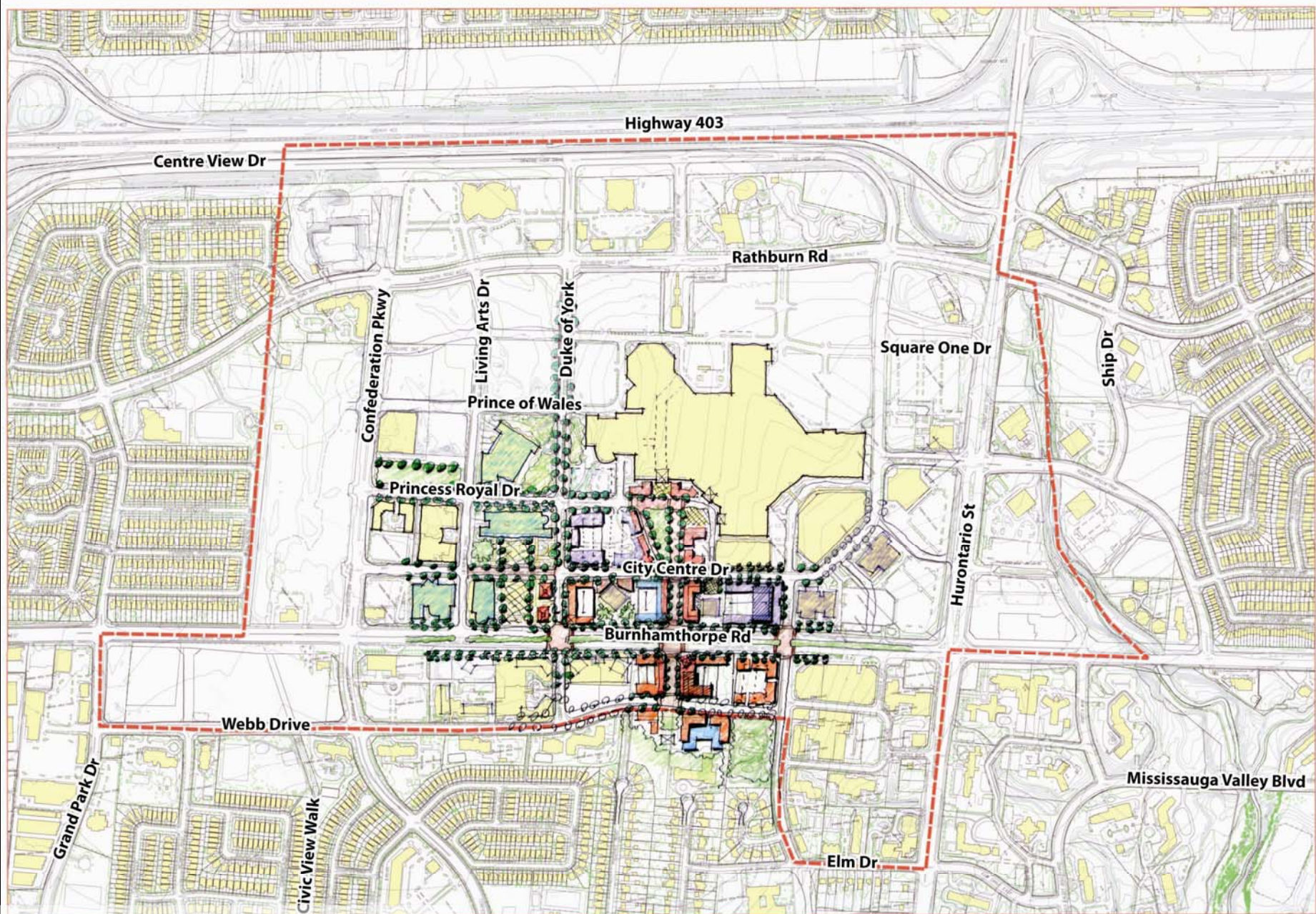
Center of Gravity



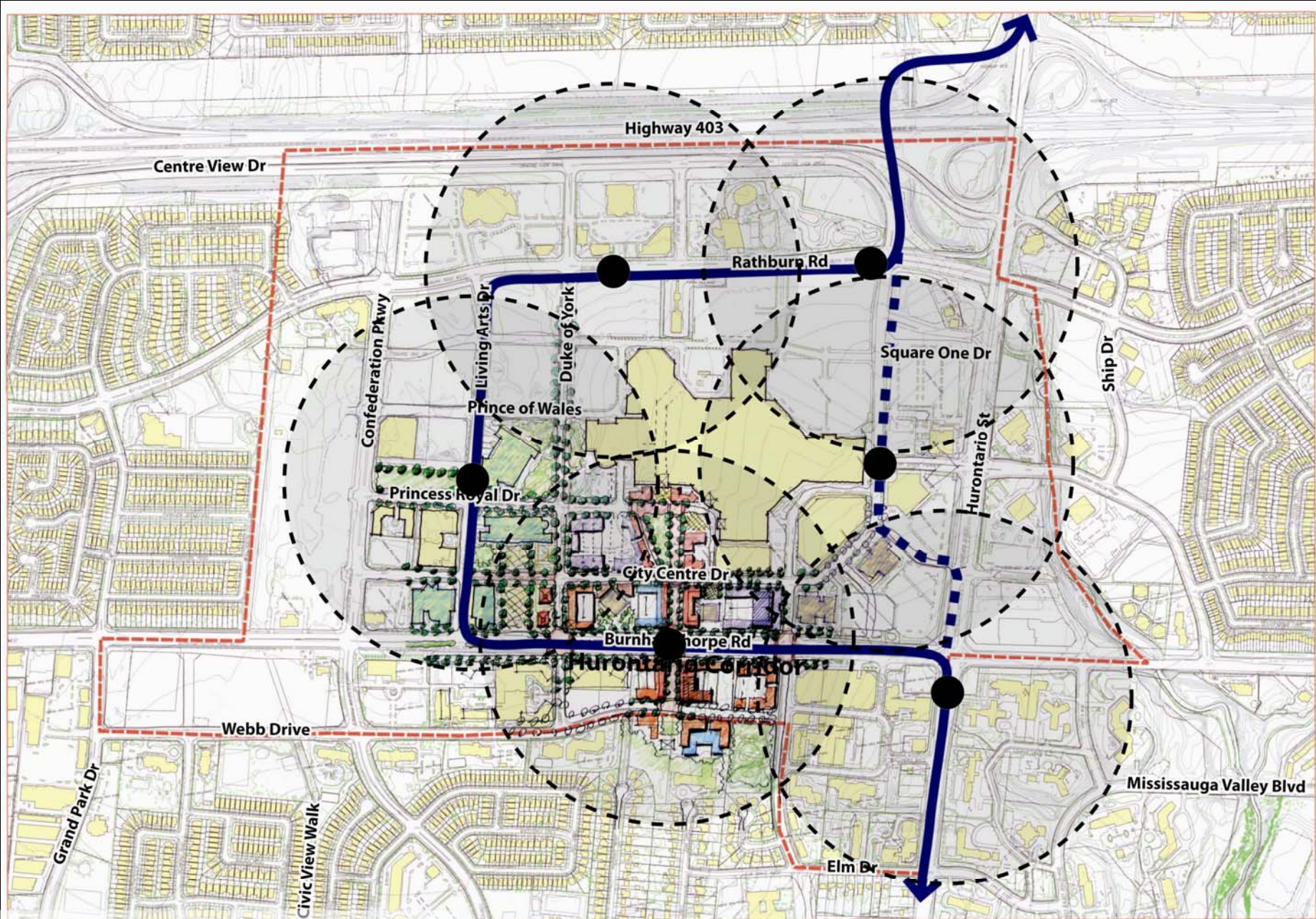
Center of Gravity



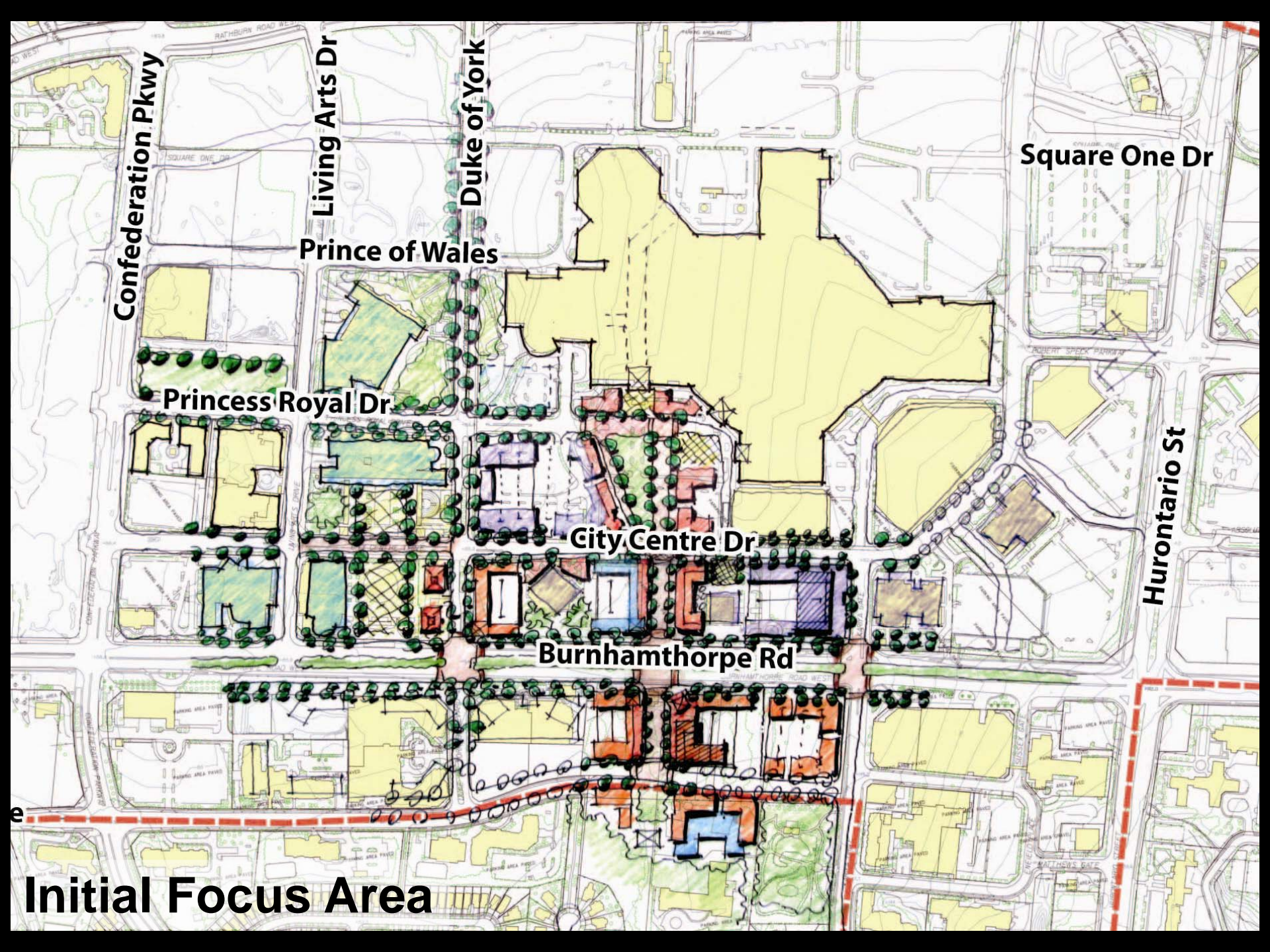
3 Levels of Focus



Initial Focus Area



Initial Focus Area



Confederation Pkwy

Living Arts Dr

Duke of York

Prince of Wales

Princess Royal Dr

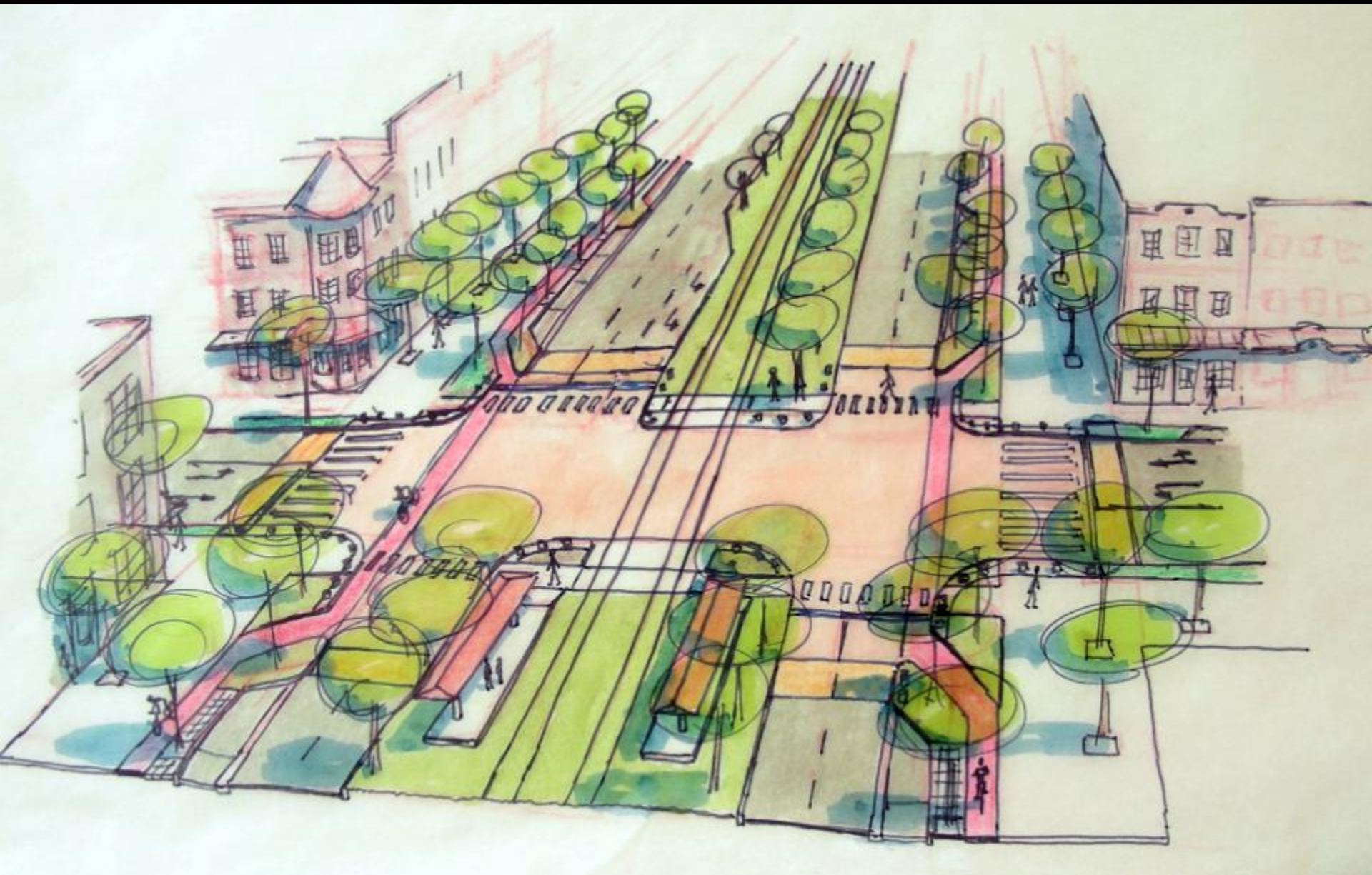
City Centre Dr

Burnhamthorpe Rd

Square One Dr

Hurontario St

Initial Focus Area



Initial Burnhamthorpe Concept

