

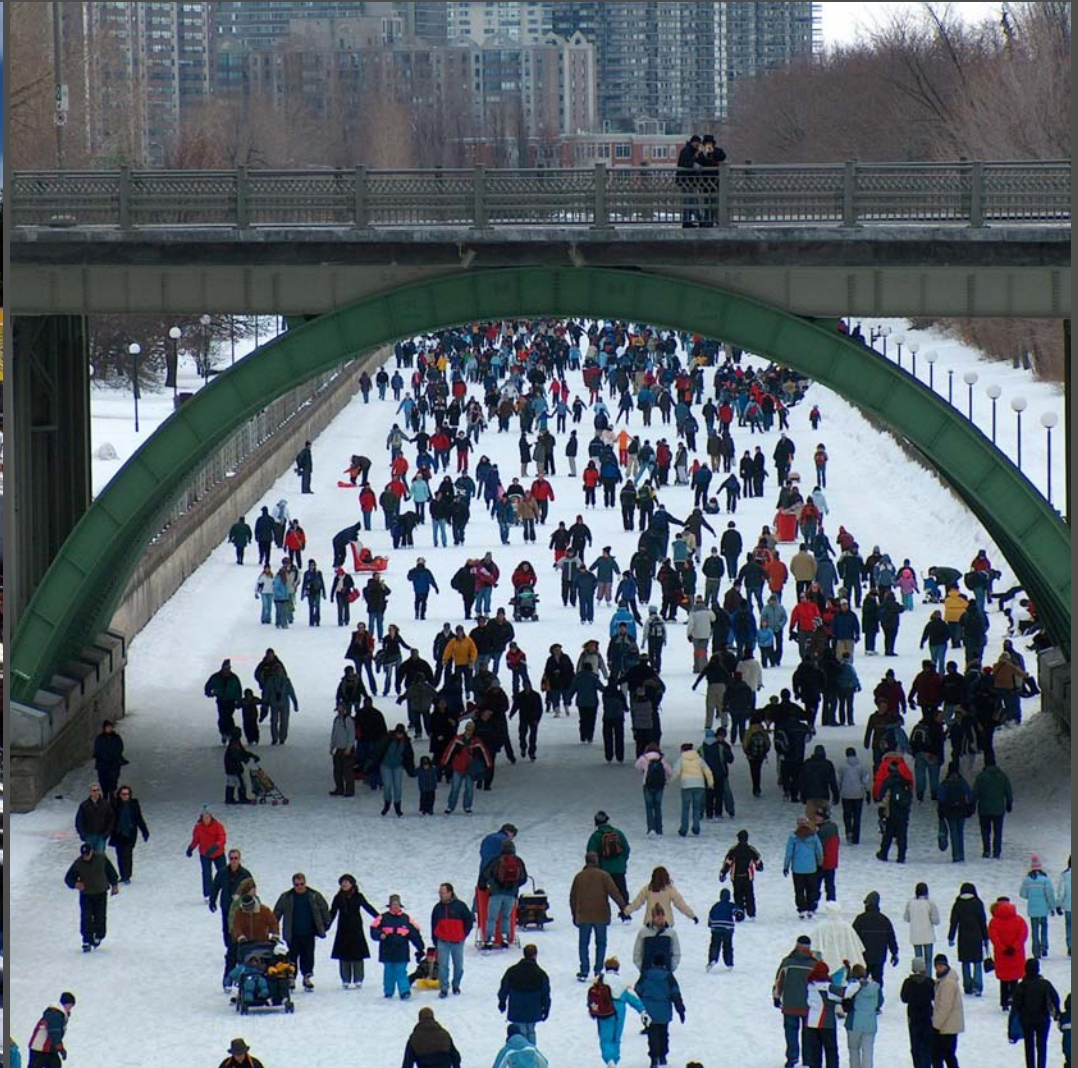
CORKTOWN FOOTBRIDGE



RIDEAU CANAL, OTTAWA

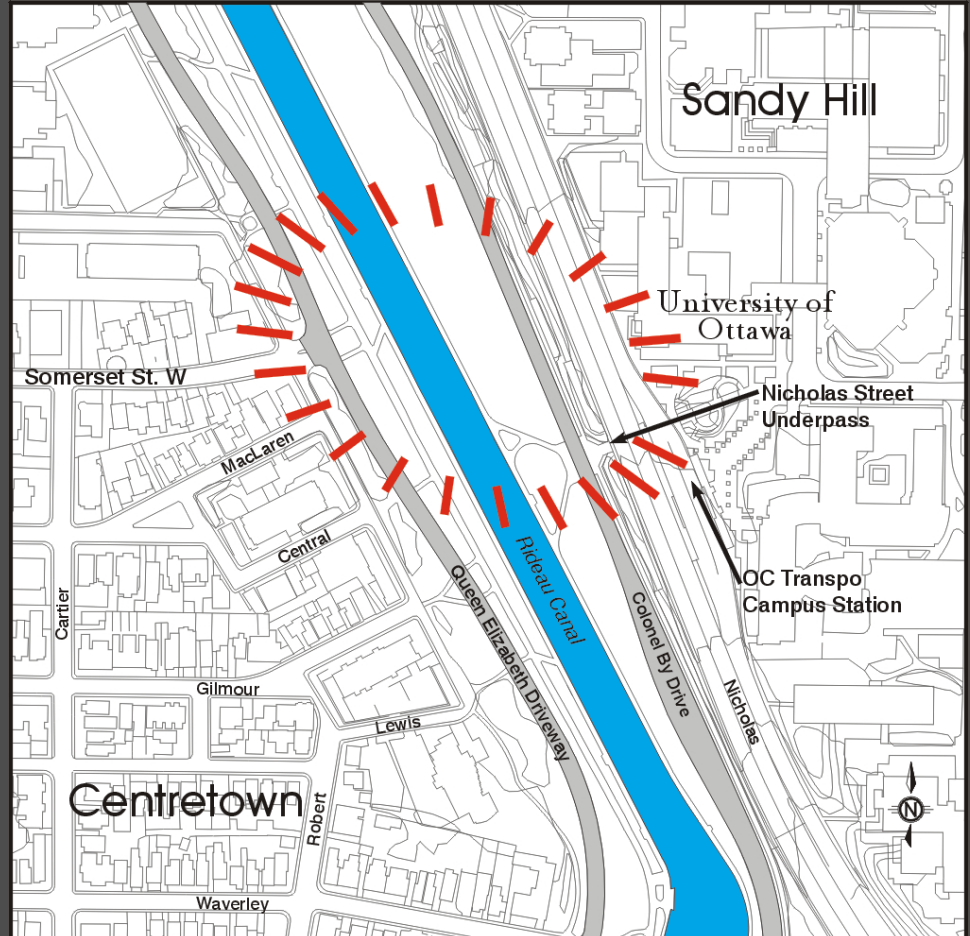


RECREATIONAL RESOURCE



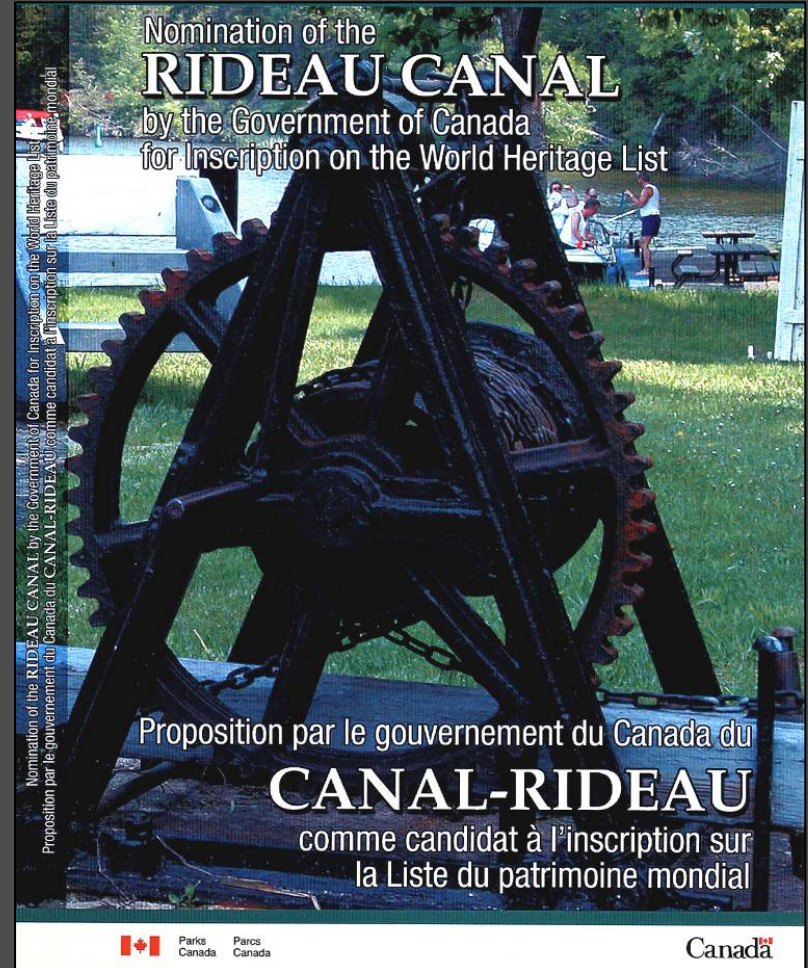
THE NEED

- Connect Centretown to Sandy Hill and the Campus Transit Station for local pedestrians and cyclists
- Improve access for University of Ottawa
- Strategic crossing for Recreation Pathway users
- Pedestrian route for tourists



WORLD HERITAGE SITE

- North America's oldest continuous operating waterway: 175 years continuous operation in 2007
- Notable for history of engineering innovation
- Nominated (now confirmed) for World Heritage Site status
- Parks Canada jurisdiction

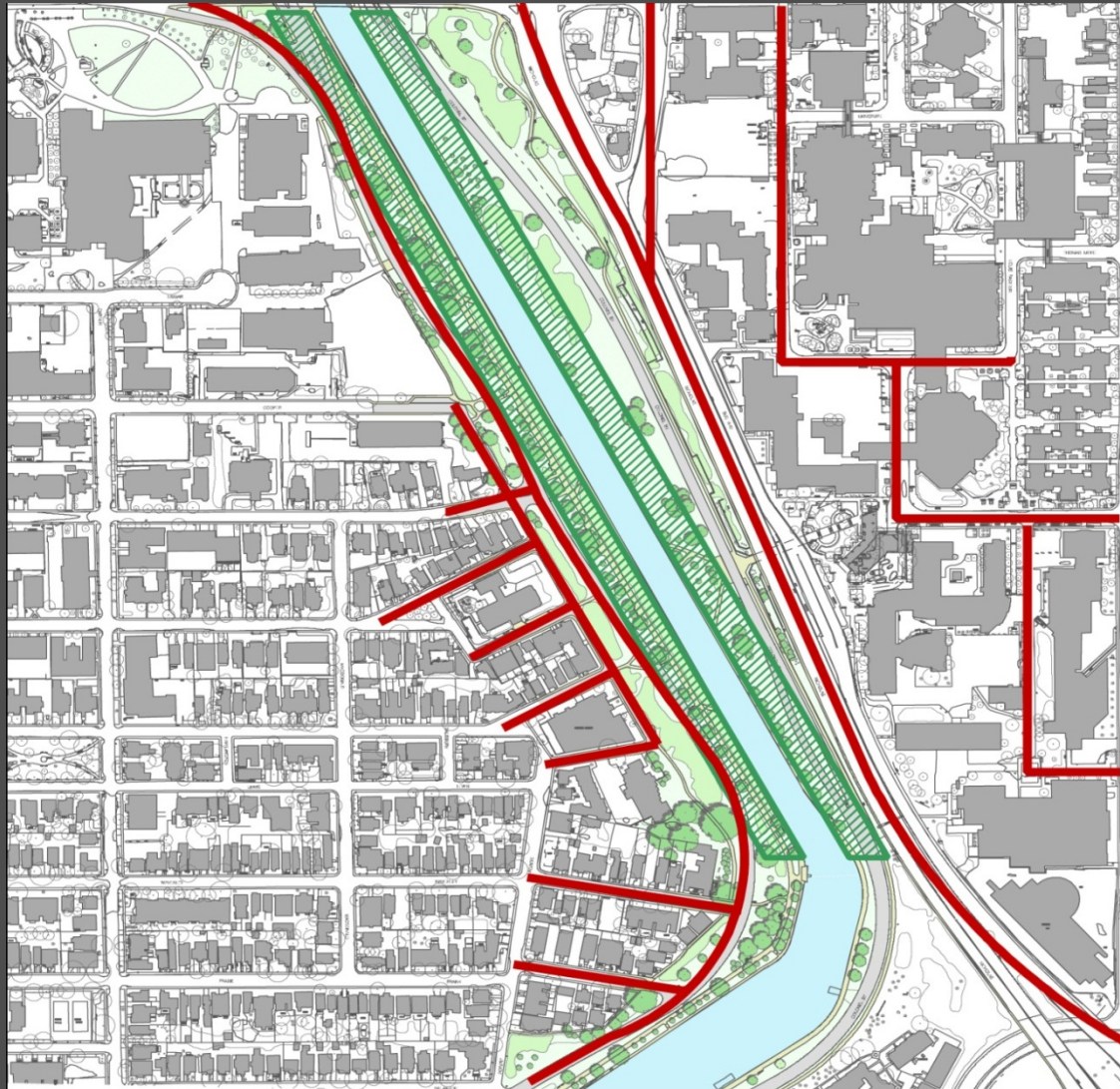


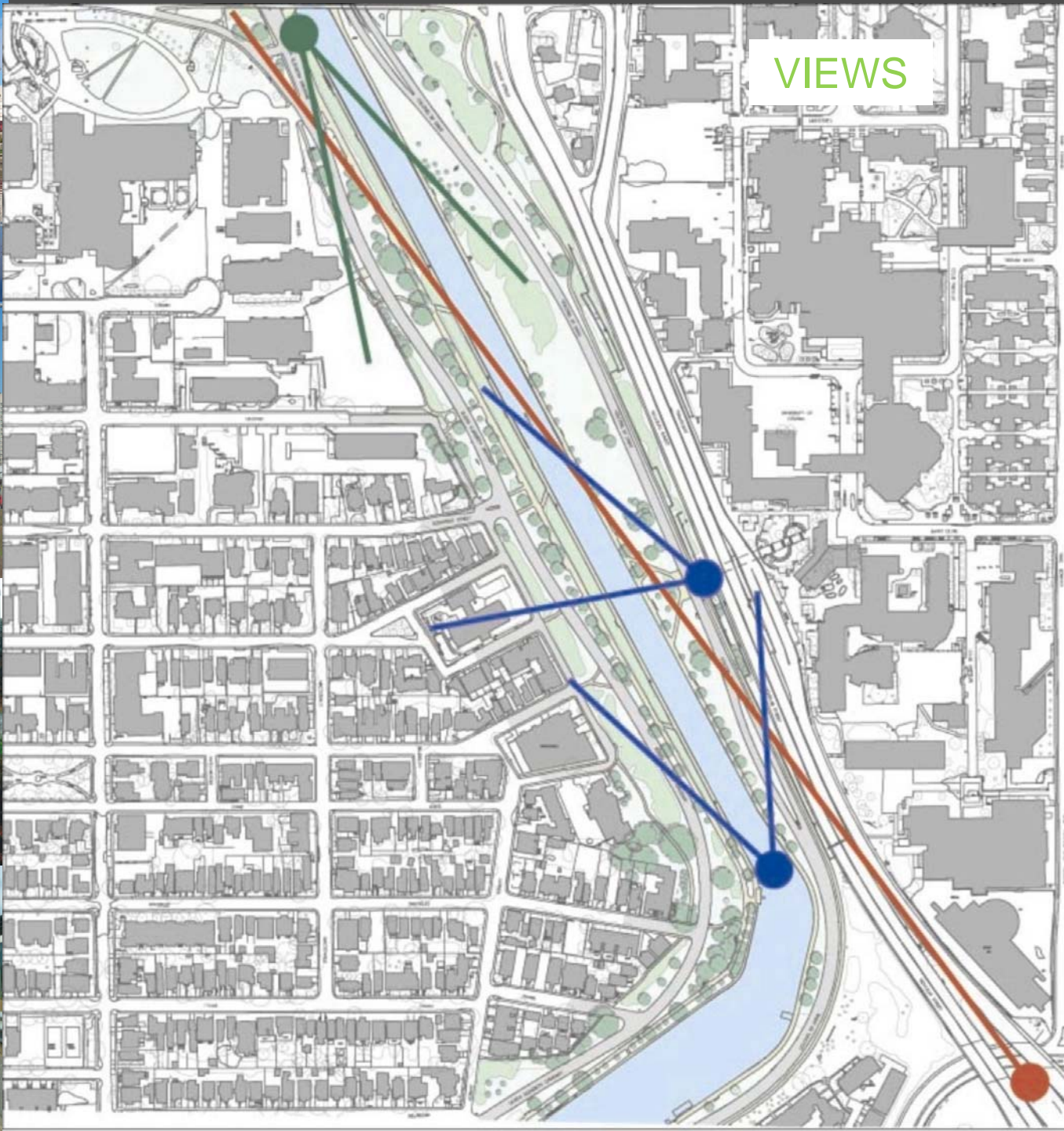
RESPONDING TO RIDEAU HERITAGE

- What can we learn from previous bridge crossings?
- Architectural expression to be of its own time



URBAN PATTERN





VIEWS

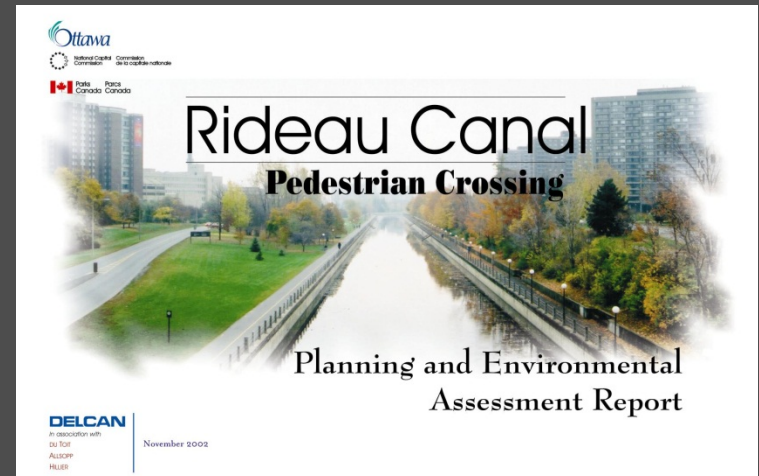
VISUAL IMPACT

- 3D visualisation to compare visual impact of different structures within the same setting

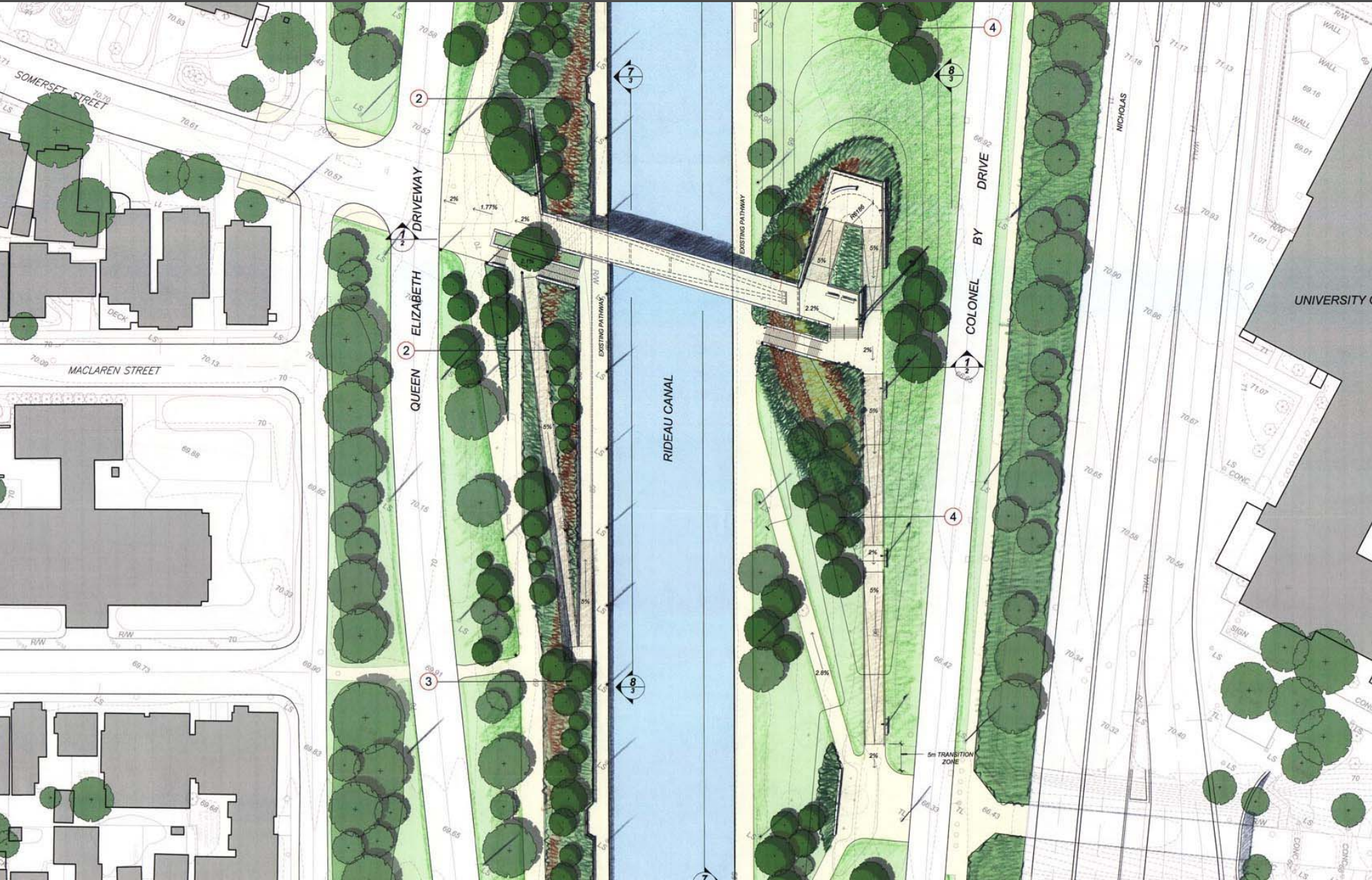


TIMELINE

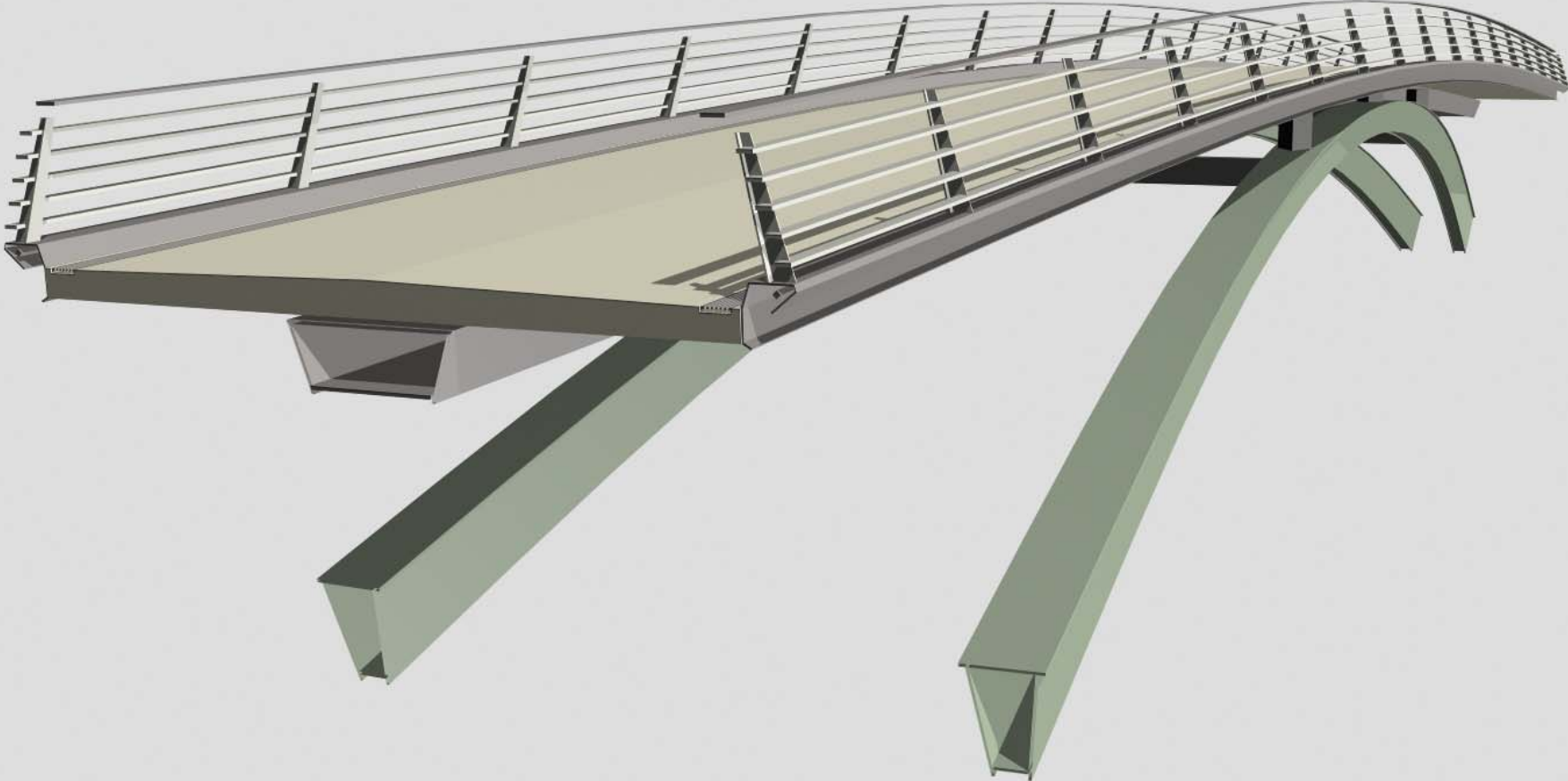
- 2001- 2002 ACPDR Introduction, Concepts, Preferred Concept presentations
- November 2002 Planning & EA Report
- 2003 Accessibility, Transportation and Cycling Advisory Committees provided “general endorsement” of developed concepts
- May 2003 EA approved and accepted by City Council, funding allocated for Design and Construction
- June 2003 ACPDR Final Presentation
- 2004 Detailed Design
- 2005-2006 Construction
- Fall 2006 Open to public



PREFERRED CONCEPT



PREFERRED CONCEPT



LANDSCAPE





VIEW FROM ABOVE



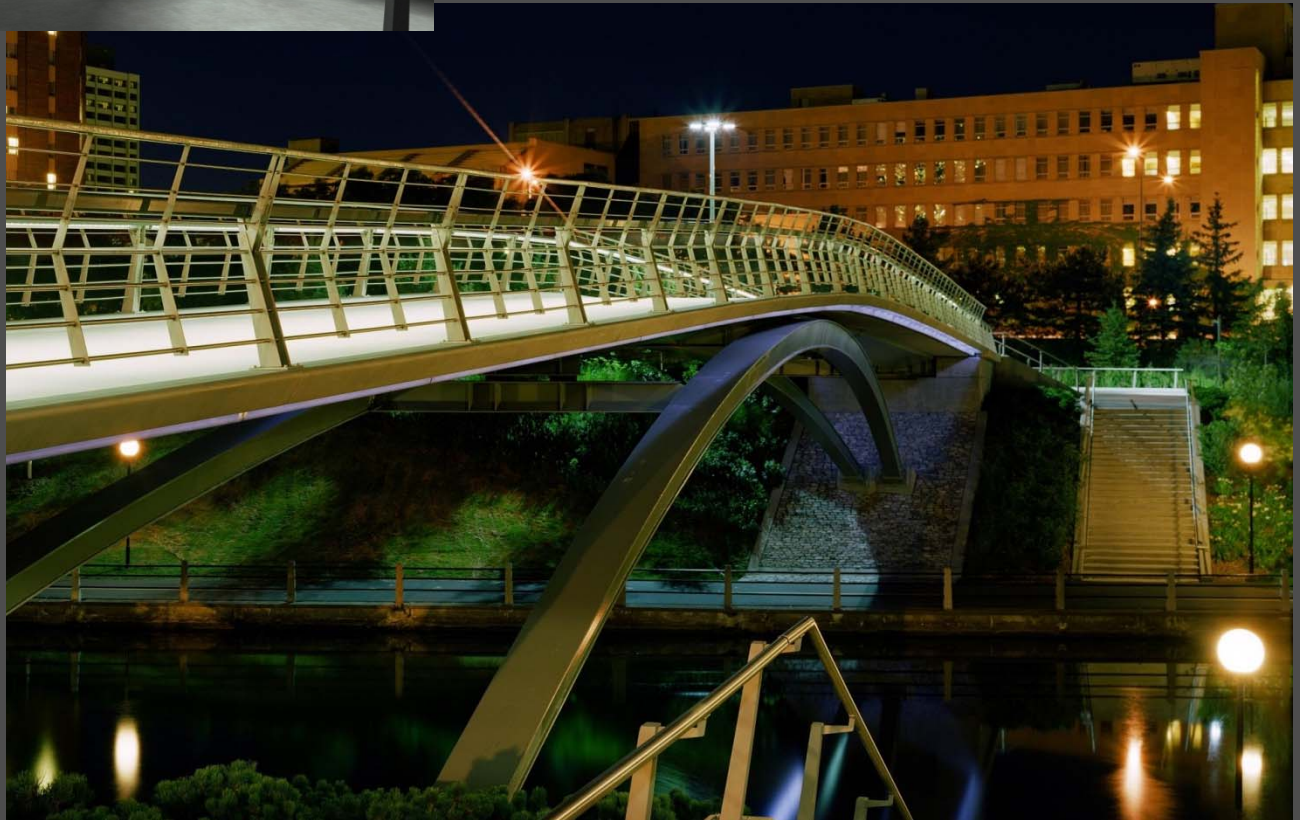
SUMMER VIEW



WINTER VIEW



NIGHT EXPERIENCE



MATERIALITY & DETAILING



DESIGN EXCELLENCE

- CIP Award of Excellence for Planning and EA Report 2003
- Ottawa Urban Design Award 2007
- Design Exchange Urban Design Award 2008
- RAIC National Award Civic Design 2008

Mark Langridge, Architect & Principal,
DTAH
www.dtah.com

