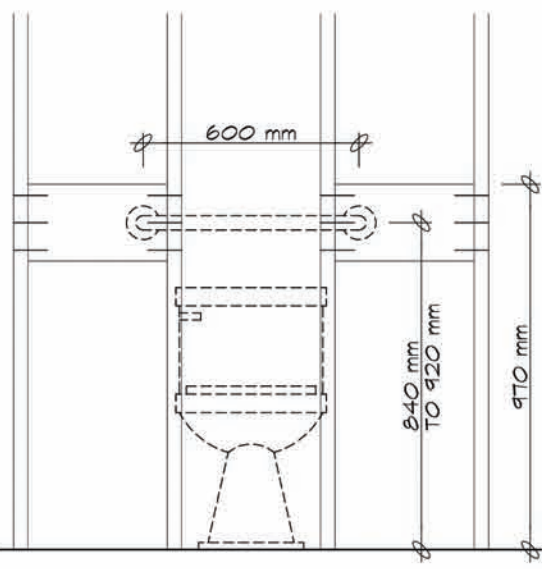


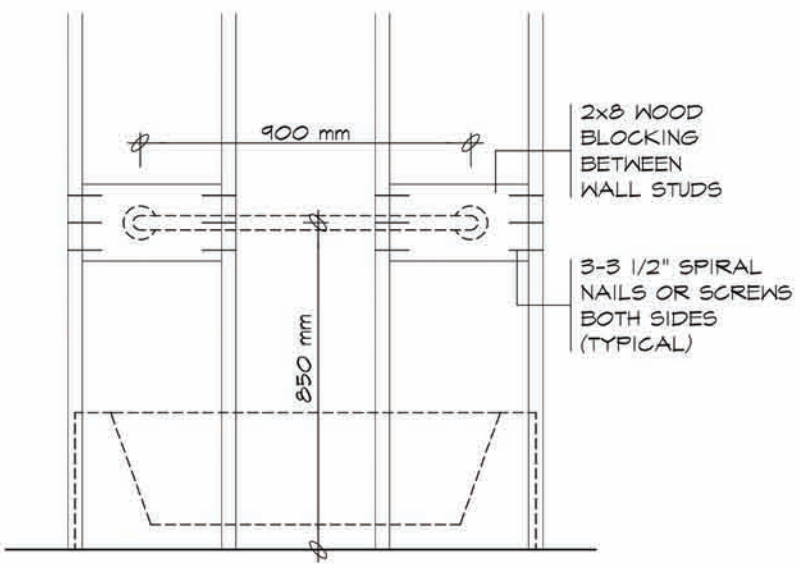
OPTION 1

OPTION 2

W.C. SIDE ELEVATION



W.C. FRONT ELEVATION



SHOWER/TUB WALL SIDE ELEVATION

GRAB BAR REINFORCEMENT

REINFORCEMENT SHALL BE INSTALLED TO PERMIT THE FUTURE INSTALLATION OF A GRAB BAR IN THE MAIN BATHROOM OF A DWELLING UNIT. IF GRAB BAR IS NOT INSTALLED AT TIME OF CONSTRUCTION, BLOCKING FOR BOTH CONFIGURATIONS AT SIDE OF WATER CLOSET IS REQUIRED.

GRAB BAR INSTALLATION SPECIFICATION

1. BESIDE WATER CLOSET

OPTION 1
L-SHAPED GRAB BAR WITH 760mm LONG HORIZ. AND VERT. COMPONENTS MOUNTED W/ HORIZ. COMPONENT 750mm TO 900mm A.F.F. AND THE VERTICAL COMPONENT 150mm IN FRONT OF TOILET BOWL.

OPTION 2
MIN. 760mm LONG GRAB BAR MOUNTED AT A 30° TO 50° ANGLE SLOPING UPWARDS AWAY FROM WATER CLOSET W/ LOWER END OF BAR MOUNTED 750mm TO 900mm A.F.F. AND 50mm IN FRONT OF TOILET BOWL.

2. BEHIND WATER CLOSET

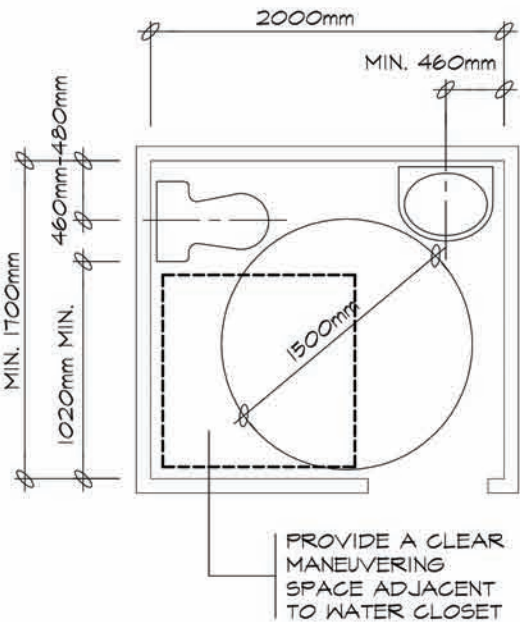
MIN. 600mm LONG GRAB BAR MOUNTED HORIZONTALLY ON WALL 840mm TO 920mm ABOVE THE FLOOR AND 150mm ABOVE THE WATER TANK IF APPLICABLE.

3. BEHIND BATHTUB OR SHOWER

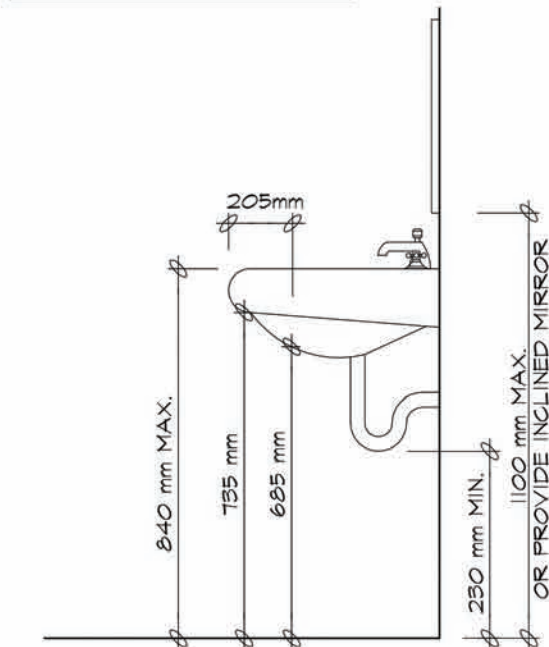
MIN. 900mm LONG GRAB BAR MOUNTED HORIZONTALLY ON WALL APPROXIMATELY 850mm ABOVE FINISHED FLOOR. LOCATE OPPOSITE SHOWER ENTRANCE SO THAT NOT LESS THAN 300mm OF ITS LENGTH IS AT ONE SIDE OF THE SEAT.

4. GRAB BAR ATTACHMENT

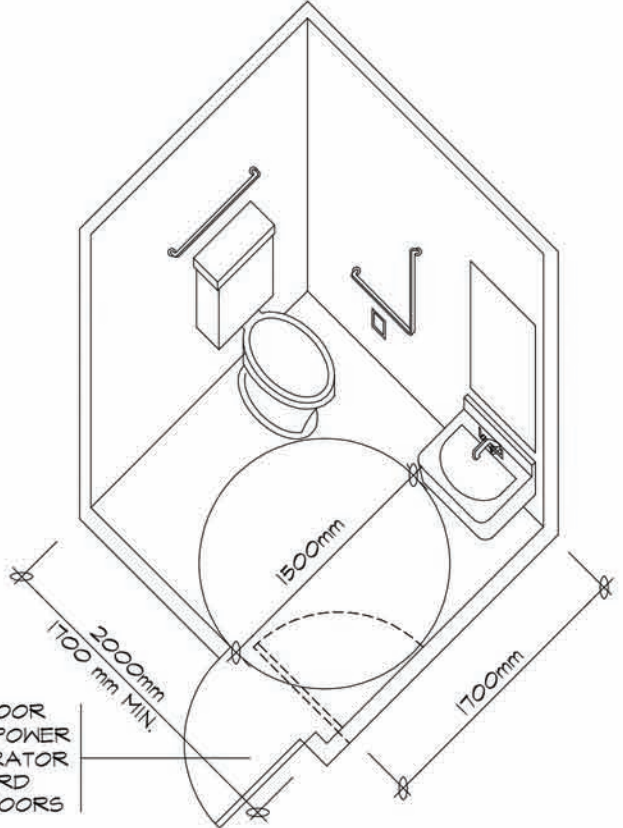
GRAB BAR MUST BE ATTACHED WITH SCREWS WHICH PENETRATE AT LEAST 32mm INTO THE SOLID BLOCKING.



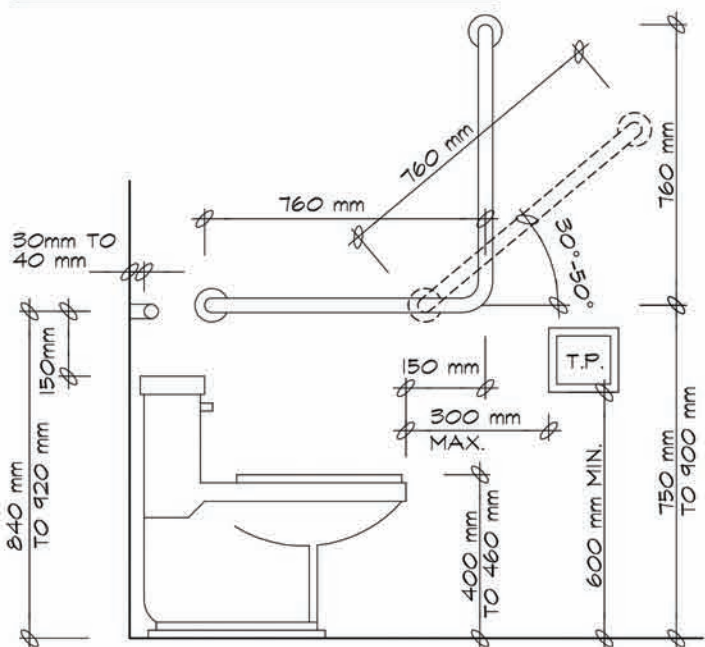
CLEARANCES FROM WALL TO FIXTURES



CLEARANCES BENEATH A LAVATORY



UNIVERSAL TOILET ROOM W/ OUTWARD SWINGING DOOR



WATER CLOSET & GRAB BARS

DOORS

A MINIMUM 900mm DOOR IS REQUIRED WITH A MINIMUM UNOBSTRUCTED CLEAR WIDTH OF 850mm. THE DOOR MUST SWING OUT, UNLESS ENOUGH AREA IS PROVIDED WITHIN THE WASHROOM TO PERMIT CLOSING THE DOOR WITHOUT INTERFERING WITH THE WHEELCHAIR. DOORS MAY BE LOCKABLE, BUT CAPABLE OF EMERGENCY RELEASE FROM THE OUTSIDE. DOOR OPENING DEVICES SHALL BE LEVER TYPE DESIGN THAT DOES NOT REQUIRE TIGHT GRASPING OR TWISTING OF THE WRIST. A DOOR CLOSER & A POWER OPERATOR IS REQUIRED WHERE THE DOOR OPENS OUTWARD.

WATER CLOSET

A SEAT HEIGHT OF 400mm TO 460mm IS REQUIRED. FLUSHING CONTROLS MUST BE EASILY ACCESSIBLE TO A WHEELCHAIR USER OR BE AUTOMATICALLY OPERABLE. A BACK SUPPORT IS REQUIRED WHERE THERE IS NO SEAT LID OR TANK. SEATS MUST NOT BE SPRING-ACTIVATED

ACCESSORIES

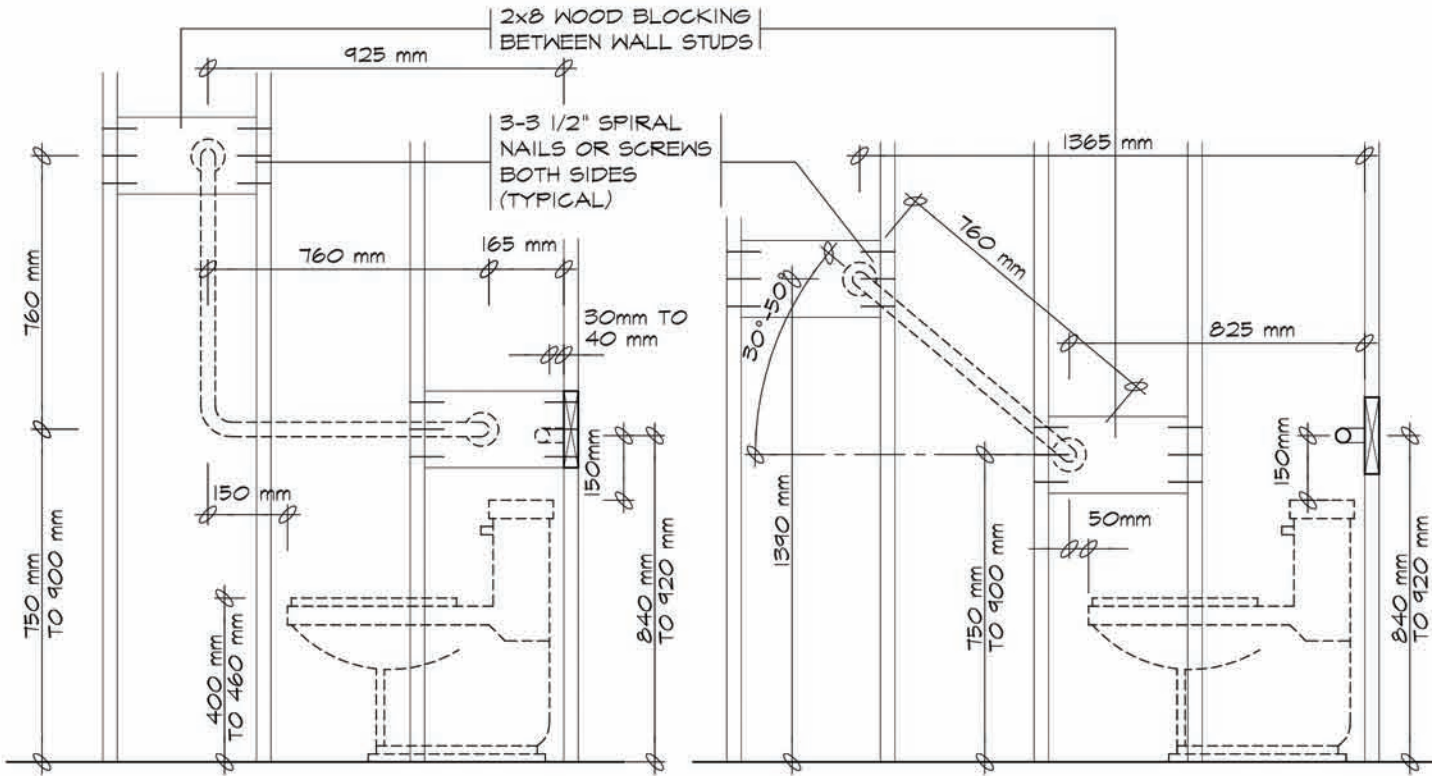
A COAT HOOK MUST BE PROVIDED. ALL ACCESSORIES, SUCH AS SOAP AND TOWEL DISPENSERS, MUST BE MOUNTED NOT MORE THAN 1200mm FROM THE FLOOR. TOILET PAPER DISPENSERS SHALL BE LOCATED (BELOW THE GRAB BAR) WITHIN 300mm IN FRONT OF THE TOILET SEAT AND MORE THAN 600mm ABOVE THE FLOOR

LAVATORIES

MUST BE NOT MORE THAN 840mm FROM THE TOP OF A BASIN OR VANITY TO THE FLOOR. A 760mm WIDE AREA REQUIRES THE FOLLOWING CLEARANCES BENEATH THE LAVATORY: 735mm UNDER THE FRONT EDGE; 685mm AT A POINT 205mm BACK FROM THE FRONT EDGE; 230mm OVER THE DISTANCE FROM A POINT 280mm TO A POINT 430mm BACK FROM THE FRONT EDGE. INSULATED PLUMBING OR WATER SUPPLY TEMPERATURE LIMITED TO 43° TO PREVENT BURNS. FAUCET HANDLES OF THE LEVER TYPE OR AUTOMATICALLY OPERABLE ARE REQUIRED, AND MUST NOT BE SPRING-LOADED NOR LOCATED NO FURTHER THAN 485mm FROM THE CENTRE LINE TO THE FRONT EDGE OF THE BASIN OR VANITY.

GRAB BARS

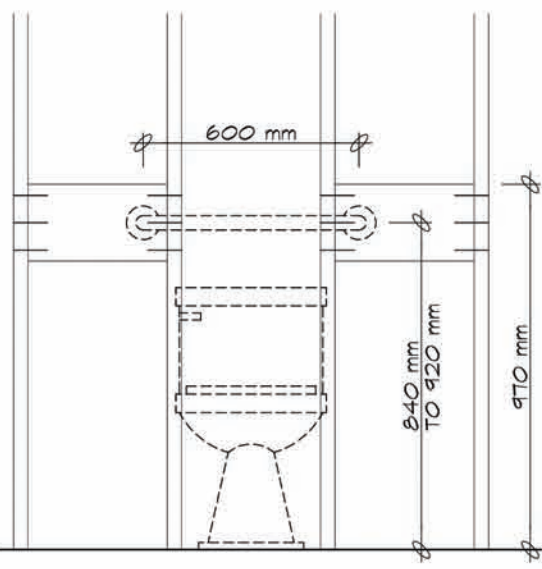
TWO ARE REQUIRED, ONE BEHIND THE WATER CLOSET, THE OTHER TO BE MOUNTED BESIDE THE WATER CLOSET. SEE THE ILLUSTRATION ABOVE FOR DIMENSIONING. GRAB BARS MUST BE SLIP RESISTANT, 30-40mm DIAMETER, AND MUST SUPPORT A LOAD UP TO 1.3KN APPLIED VERTICALLY & HORIZONTALLY. GRAB BARS MUST BE ATTACHED WITH SCREWS WHICH PENETRATE AT LEAST 32mm INTO THE SOLID BLOCKING.



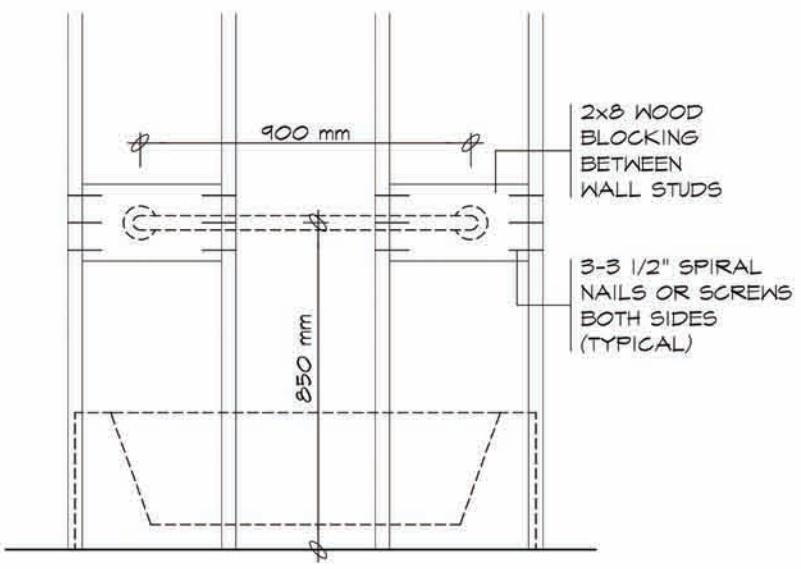
OPTION 1

OPTION 2

W.C. SIDE ELEVATION



W.C. FRONT ELEVATION



SHOWER/TUB WALL SIDE ELEVATION

GRAB BAR REINFORCEMENT

REINFORCEMENT SHALL BE INSTALLED TO PERMIT THE FUTURE INSTALLATION OF A GRAB BAR IN THE MAIN BATHROOM OF A DWELLING UNIT. IF GRAB BAR IS NOT INSTALLED AT TIME OF CONSTRUCTION, BLOCKING FOR BOTH CONFIGURATIONS AT SIDE OF WATER CLOSET IS REQUIRED.

GRAB BAR INSTALLATION SPECIFICATION

1. BESIDE WATER CLOSET

OPTION 1
L-SHAPED GRAB BAR WITH 760mm LONG HORIZ. AND VERT. COMPONENTS MOUNTED W/ HORIZ. COMPONENT 750mm TO 900mm A.F.F. AND THE VERTICAL COMPONENT 150mm IN FRONT OF TOILET BOWL.

OPTION 2
MIN. 760mm LONG GRAB BAR MOUNTED AT A 30° TO 50° ANGLE SLOPING UPWARDS AWAY FROM WATER CLOSET W/ LOWER END OF BAR MOUNTED 750mm TO 900mm A.F.F. AND 50mm IN FRONT OF TOILET BOWL.

2. BEHIND WATER CLOSET

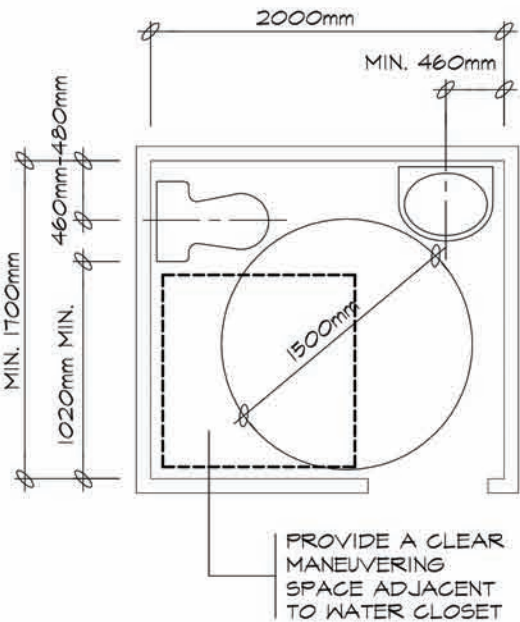
MIN. 600mm LONG GRAB BAR MOUNTED HORIZONTALLY ON WALL 840mm TO 920mm ABOVE THE FLOOR AND 150mm ABOVE THE WATER TANK IF APPLICABLE.

3. BEHIND BATHTUB OR SHOWER

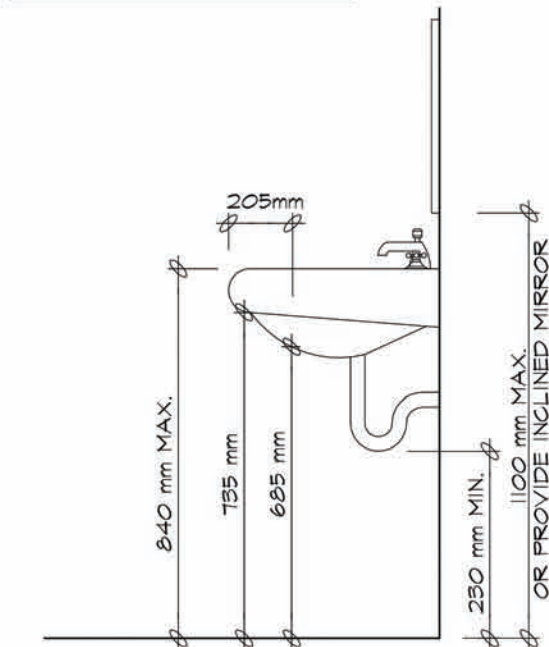
MIN. 900mm LONG GRAB BAR MOUNTED HORIZONTALLY ON WALL APPROXIMATELY 850mm ABOVE FINISHED FLOOR. LOCATE OPPOSITE SHOWER ENTRANCE SO THAT NOT LESS THAN 300mm OF ITS LENGTH IS AT ONE SIDE OF THE SEAT.

4. GRAB BAR ATTACHMENT

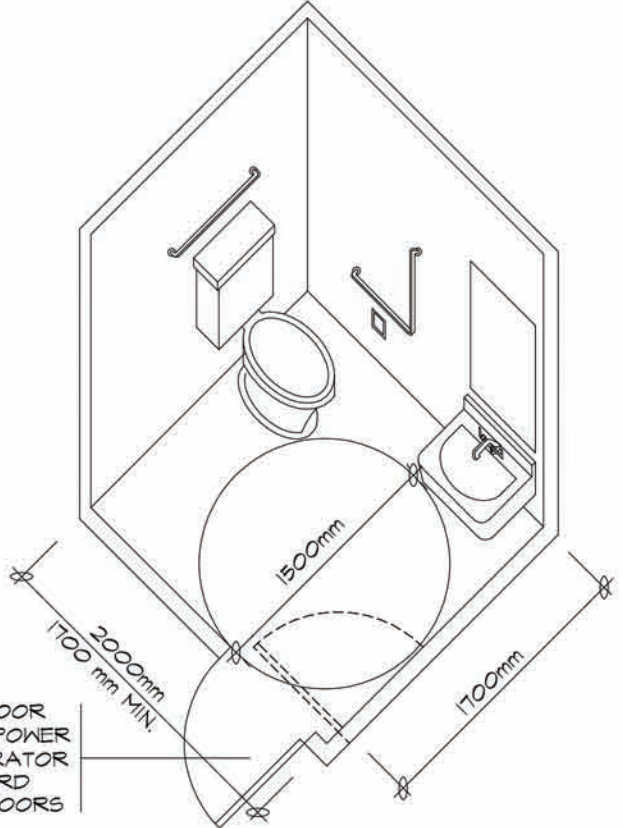
GRAB BAR MUST BE ATTACHED WITH SCREWS WHICH PENETRATE AT LEAST 32mm INTO THE SOLID BLOCKING.



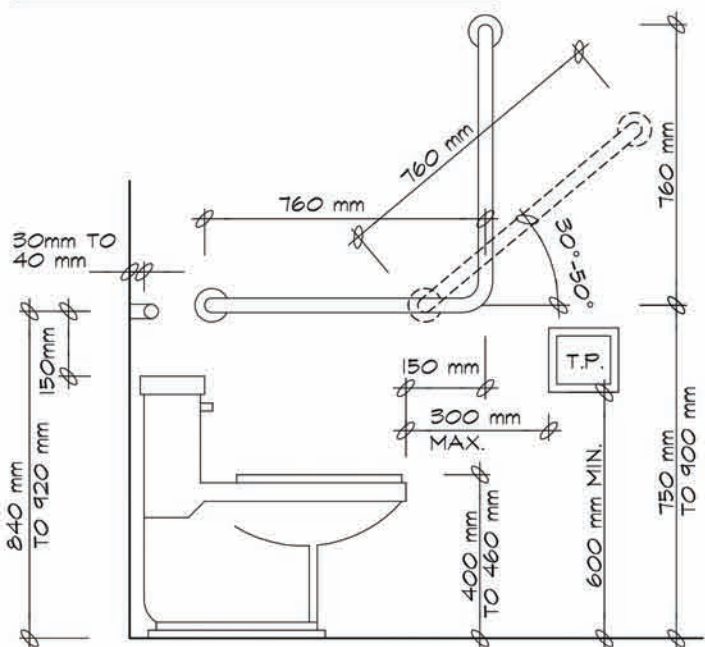
CLEARANCES FROM WALL TO FIXTURES



CLEARANCES BENEATH A LAVATORY



UNIVERSAL TOILET ROOM W/ OUTWARD SWINGING DOOR



WATER CLOSET & GRAB BARS

DOORS

A MINIMUM 900mm DOOR IS REQUIRED WITH A MINIMUM UNOBSTRUCTED CLEAR WIDTH OF 850mm. THE DOOR MUST SWING OUT, UNLESS ENOUGH AREA IS PROVIDED WITHIN THE WASHROOM TO PERMIT CLOSING THE DOOR WITHOUT INTERFERING WITH THE WHEELCHAIR. DOORS MAY BE LOCKABLE, BUT CAPABLE OF EMERGENCY RELEASE FROM THE OUTSIDE. DOOR OPENING DEVICES SHALL BE LEVER TYPE DESIGN THAT DOES NOT REQUIRE TIGHT GRASPING OR TWISTING OF THE WRIST. A DOOR CLOSER & A POWER OPERATOR IS REQUIRED WHERE THE DOOR OPENS OUTWARD.

WATER CLOSET

A SEAT HEIGHT OF 400mm TO 460mm IS REQUIRED. FLUSHING CONTROLS MUST BE EASILY ACCESSIBLE TO A WHEELCHAIR USER OR BE AUTOMATICALLY OPERABLE. A BACK SUPPORT IS REQUIRED WHERE THERE IS NO SEAT LID OR TANK. SEATS MUST NOT BE SPRING-ACTIVATED

ACCESSORIES

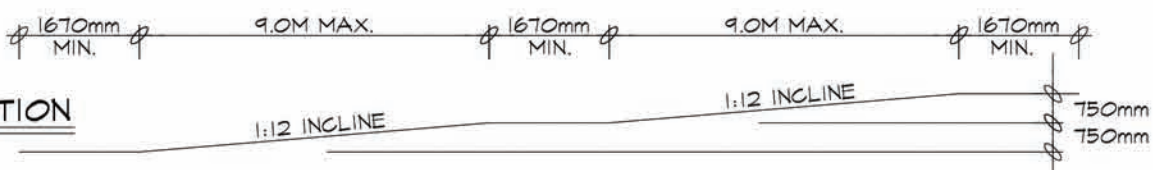
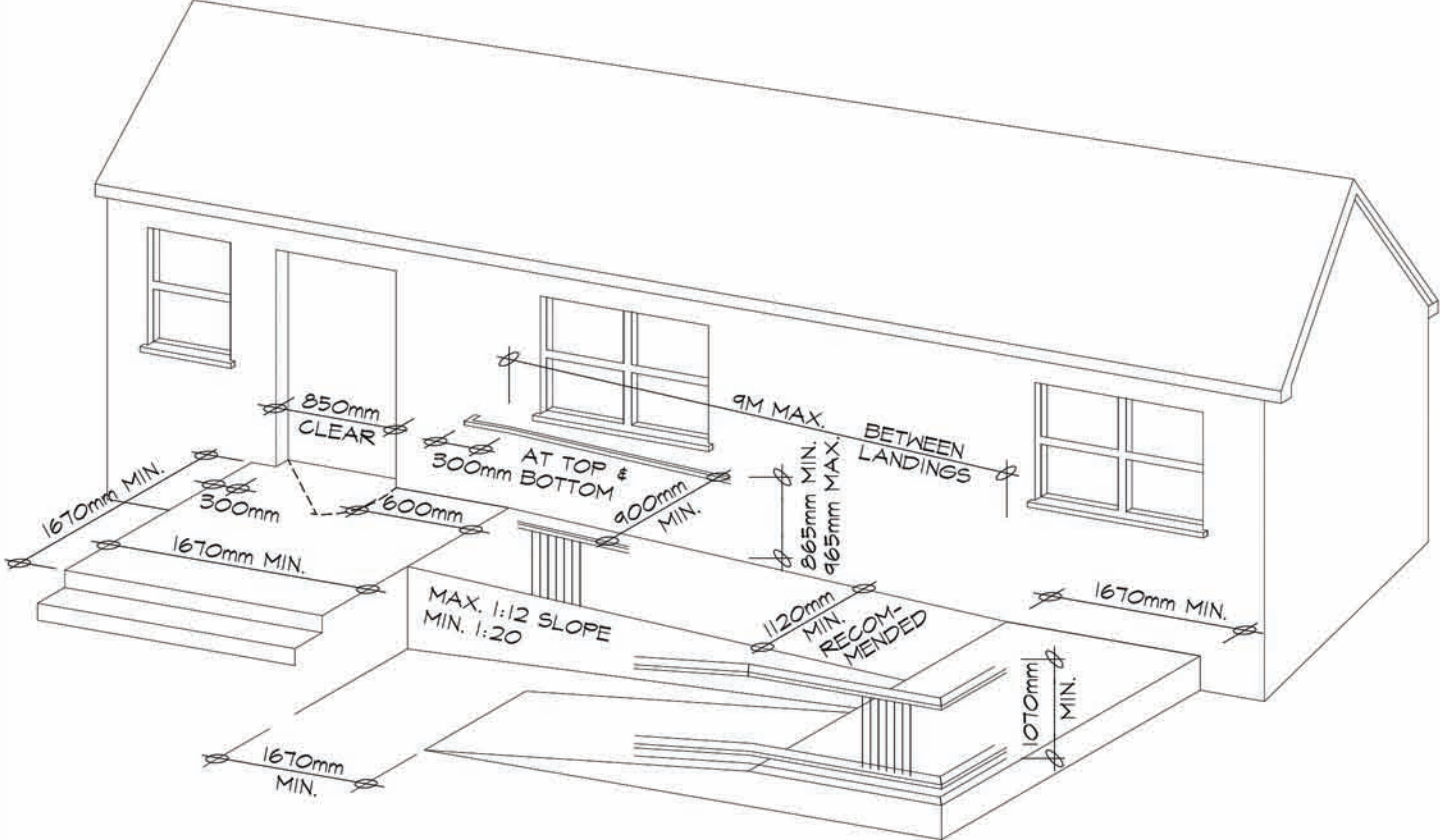
A COAT HOOK MUST BE PROVIDED. ALL ACCESSORIES, SUCH AS SOAP AND TOWEL DISPENSERS, MUST BE MOUNTED NOT MORE THAN 1200mm FROM THE FLOOR. TOILET PAPER DISPENSERS SHALL BE LOCATED (BELOW THE GRAB BAR) WITHIN 300mm IN FRONT OF THE TOILET SEAT AND MORE THAN 600mm ABOVE THE FLOOR

LAVATORIES

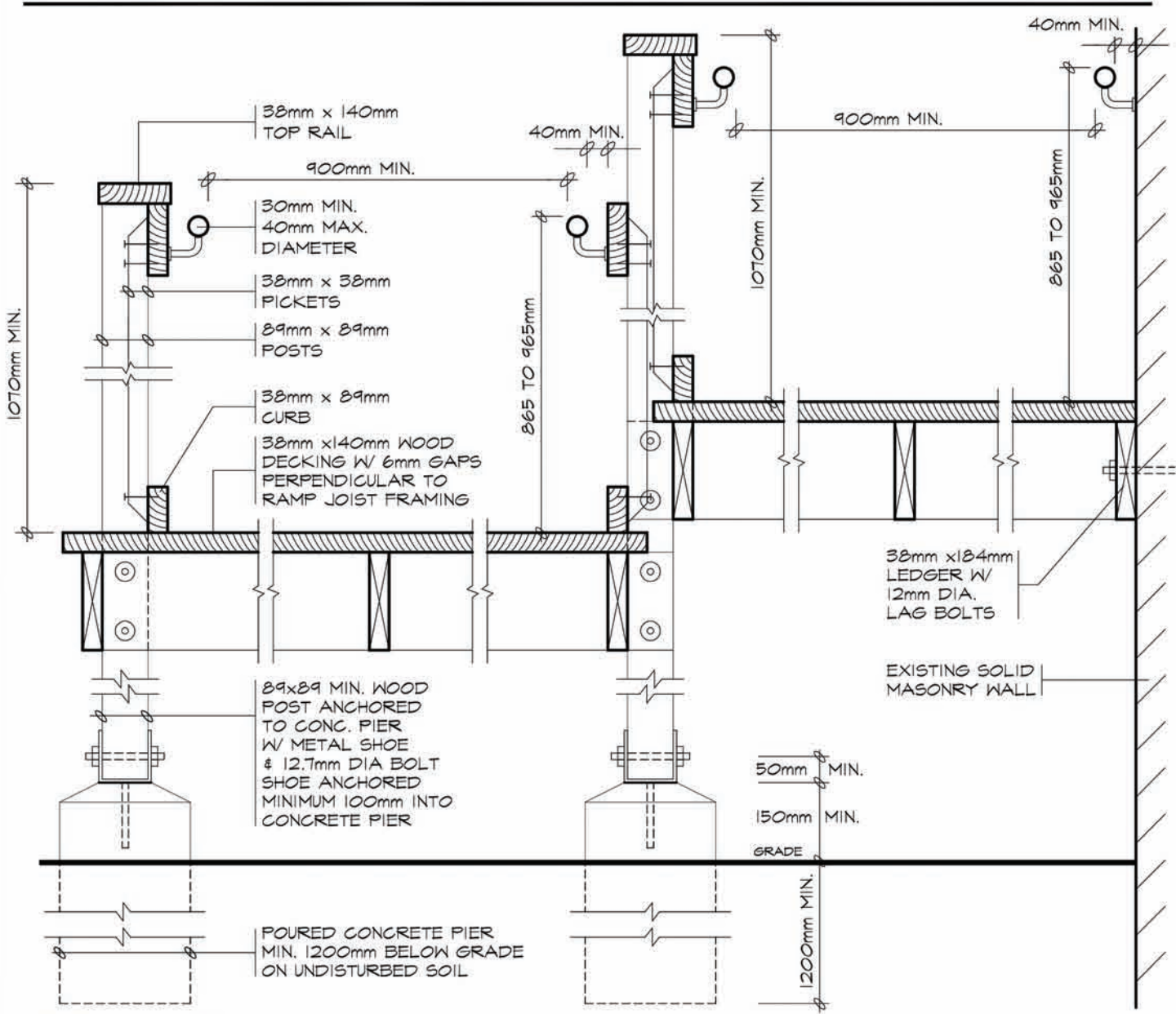
MUST BE NOT MORE THAN 840mm FROM THE TOP OF A BASIN OR VANITY TO THE FLOOR. A 760mm WIDE AREA REQUIRES THE FOLLOWING CLEARANCES BENEATH THE LAVATORY: 735mm UNDER THE FRONT EDGE; 685mm AT A POINT 205mm BACK FROM THE FRONT EDGE; 230mm OVER THE DISTANCE FROM A POINT 280mm TO A POINT 430mm BACK FROM THE FRONT EDGE. INSULATED PLUMBING OR WATER SUPPLY TEMPERATURE LIMITED TO 43° TO PREVENT BURNS. FAUCET HANDLES OF THE LEVER TYPE OR AUTOMATICALLY OPERABLE ARE REQUIRED, AND MUST NOT BE SPRING-LOADED NOR LOCATED NO FURTHER THAN 485mm FROM THE CENTRE LINE TO THE FRONT EDGE OF THE BASIN OR VANITY.

GRAB BARS

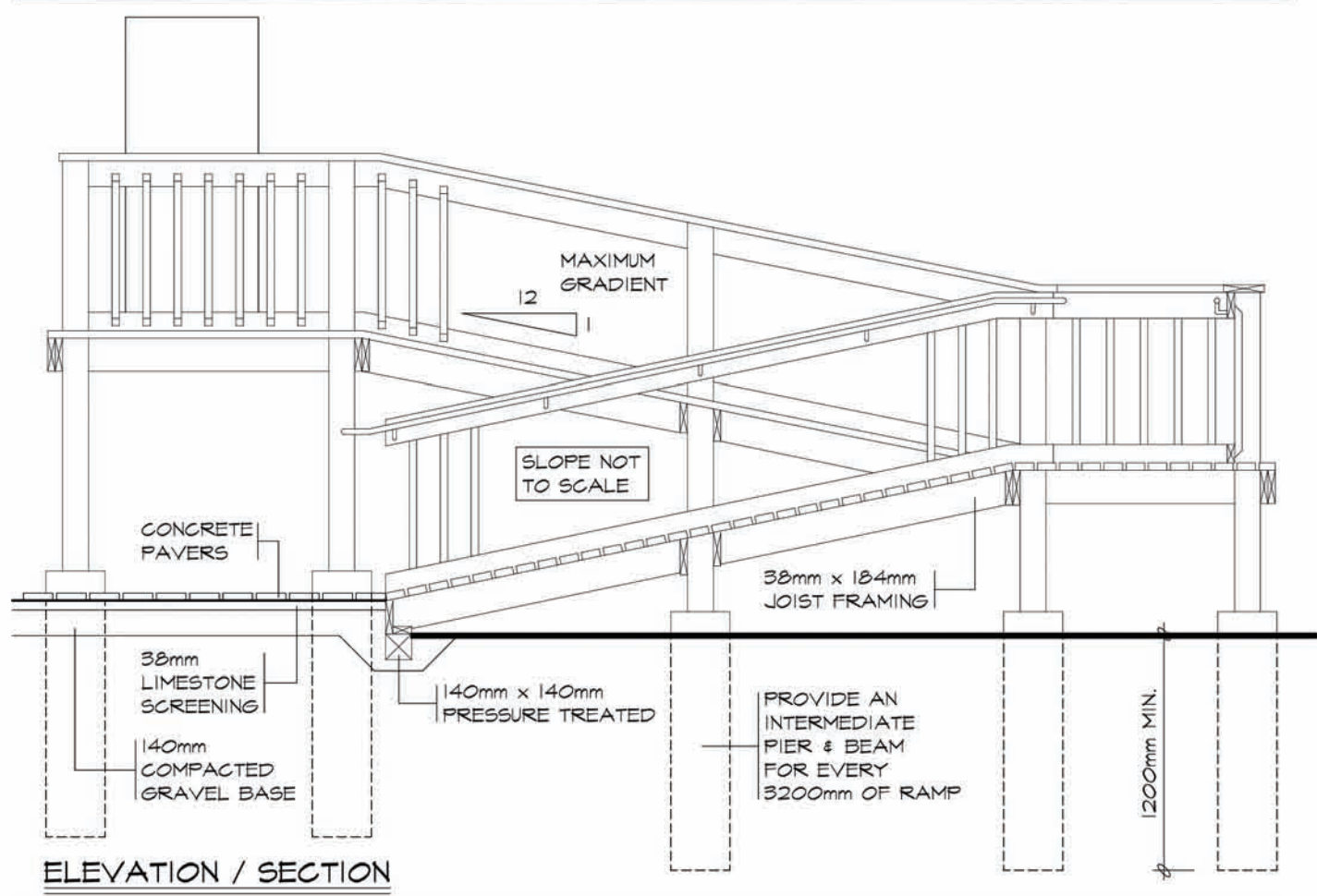
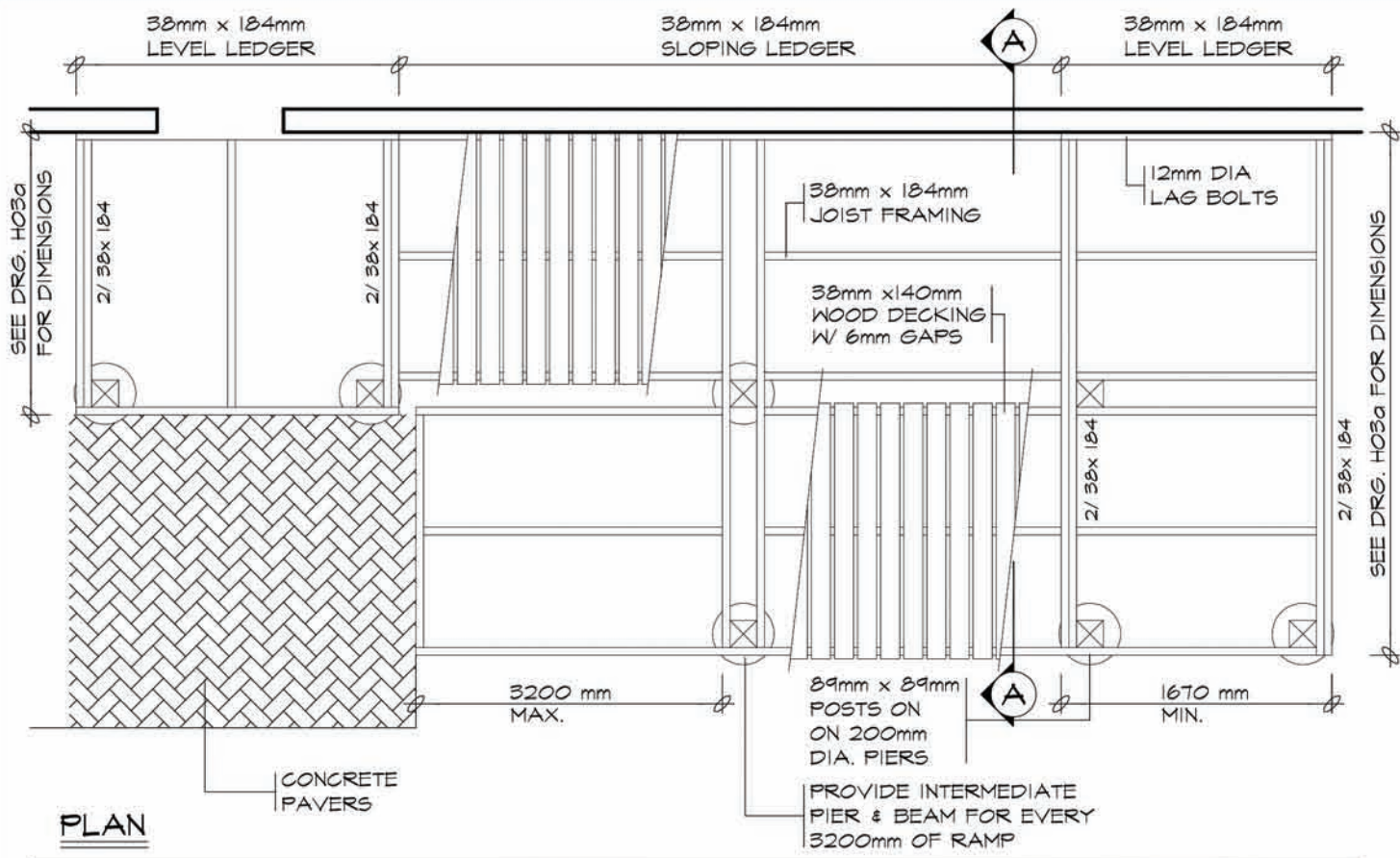
TWO ARE REQUIRED, ONE BEHIND THE WATER CLOSET, THE OTHER TO BE MOUNTED BESIDE THE WATER CLOSET. SEE THE ILLUSTRATION ABOVE FOR DIMENSIONING. GRAB BARS MUST BE SLIP RESISTANT, 30-40mm DIAMETER, AND MUST SUPPORT A LOAD UP TO 1.3KN APPLIED VERTICALLY & HORIZONTALLY. GRAB BARS MUST BE ATTACHED WITH SCREWS WHICH PENETRATE AT LEAST 32mm INTO THE SOLID BLOCKING.



ELEVATION



SECTION 'A-A'



GENERAL NOTES

1. A SITE PLAN OR SURVEY IS REQUIRED SHOWING ALL LOT LINES & DIMENSIONS, SIZE & LOCATION OF ALL BUILDINGS, LOCATION & SIZE OF RAMP & LANDING.
2. LUMBER NO. 2 SPF OR BETTER, WOOD POSTS MIN. 89x89 (SOLID). USE CORROSION RESISTANT SPIRAL NAILS OR SCREWS.
3. CONCRETE PIERS SHALL BEAR ON UNDISTURBED SOIL. THE BEARING CAPACITY OF THE SOIL SHALL BE A MINIMUM 75kPa.
4. HANDRAILS, ON BOTH SIDES, W/ 30-40mm CIRCULAR CROSS SECTION OR 100-155mm NON-CIRCULAR PERIMETER W/ MAX. 57mm CROSS SECTIONAL DIMENSION.
5. HANDRAILS MUST BE TERMINATED IN A MANNER THAT WILL NOT OBSTRUCT PEDESTRIAN TRAVEL OR CREATE A HAZARD.
6. PROVIDE A MIN. 40mm CLEARANCE BETWEEN THE HANDRAIL AND THE MOUNTING SURFACE.
7. HANDRAILS/GUARDS SHALL BE DESIGNED AND CONSTRUCTED SUCH THAT THEY WILL WITHSTAND 0.9kN POINT LOADS AND 0.7kN/m UNIFORM LOADS FROM ANY DIRECTION.